

Interdisciplinary Approaches to Advance Health Equity

Cynthia Romero, MD, FAAFP

Director, Brock Institute for Community and Global Health
Professor, EVMS Family and Community Medicine

12th Annual Advanced Practice Provider Conference
February 10, 2024
Marriott Conference Center, Newport News

Objectives

- Review definitions of community health, health disparities and health equity
- Describe examples of health disparities and healthcare inequities
- Discuss current strategies to address health disparities and advance health equity

CDC Definition of Community Health

- A public health discipline strengthening communities to prevent disease and promote healthy living at ***ALL PLACES***
- Focus on reaching people affected most by death, disability and suffering from chronic disease (health disparities)
- Goal for communities to be places where all people can achieve optimal health (health equity)

CDC Definition of Health Disparities

- Preventable differences in health outcomes
 - Disproportionate burden of disease, injury, violence, or barriers to achieve optimal health
- Often experienced by socially disadvantaged populations leading to poorer health outcomes

AHRQ Definition of Healthcare Disparities

- Preventable differences in *access to and delivery of* healthcare resulting in differences in health outcomes
 - Differences in access (lack of insurance, location)
 - Different patient care experiences due to racial, ethnic, socioeconomic and geographic groups

AHRQ Definition of Healthcare Disparities

- *National Healthcare Quality and Disparities Report*
- presents trends for measures
 - Access to care
 - Affordable care
 - Care coordination
 - Effective treatment
 - Healthy living
 - Patient safety
 - Patient-centered care

AHRQ Definition of Healthcare Disparities

Strongest and Weakest Measures by State				
Snapshot Summary	Virginia's Strongest Measures			
Strongest & Weakest	Measure	Estimate	Benchmark	Distance to Benchmark
All Topics				
Race & Ethnicity	Long-stay nursing home residents with physical restraints	0.1	0.3	Achieved: 48% Better
Income Levels				
State	Long-stay nursing home residents with a urinary tract infection	2.0	2.8	Achieved: 30% Better
Virginia	Home health care patients whose management of oral medications improved	79.8	66.2	Achieved: 20% Better
	Hospital admissions for community-acquired pneumonia per 100,000 population, age 18 and over	109.8	137.1	Achieved: 20% Better
	Home health care patients whose ability to get in and out of bed improved	85.0	72.6	Achieved: 17% Better
	Virginia's Weakest Measures			
	Measure	Estimate	Benchmark	Distance to Benchmark
	New HIV cases per 100,000 population age 13 and over	10.8	4.1	165%
	Adults who had a doctor's office or clinic visit in the last 6 or 12 months whose health providers sometimes or never showed respect for what they had to say, Medicare managed care	5.2	1.7	213%
	Hospital admissions for immunization-preventable influenza per 100,000 population, age 65 and over	171.3	52.9	224%
	Drug overdose deaths involving any opioid per 100,000 resident population	26.0	4.3	507%
	Drug overdose deaths involving other synthetic opioids (other than methadone) per 100,000 resident population	24.1	1.1	2195%
Download PDF				

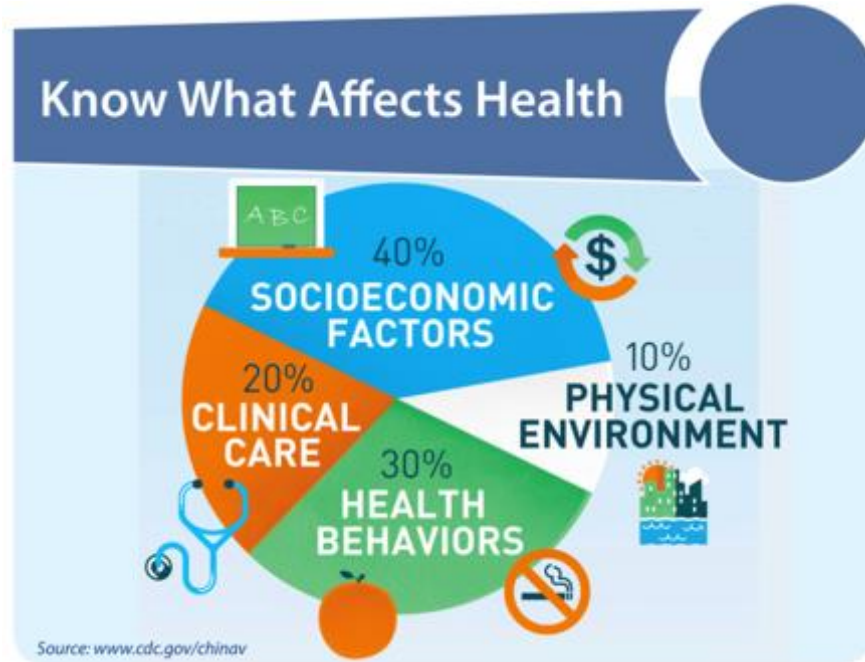
WHO Definition of Health Inequities

- Systematic differences between populations
 - Result *in* differences in health status or health outcomes
 - Result *of* differences in distribution of resources
 - Differences are unfair, unjust and avoidable with right mix of policies

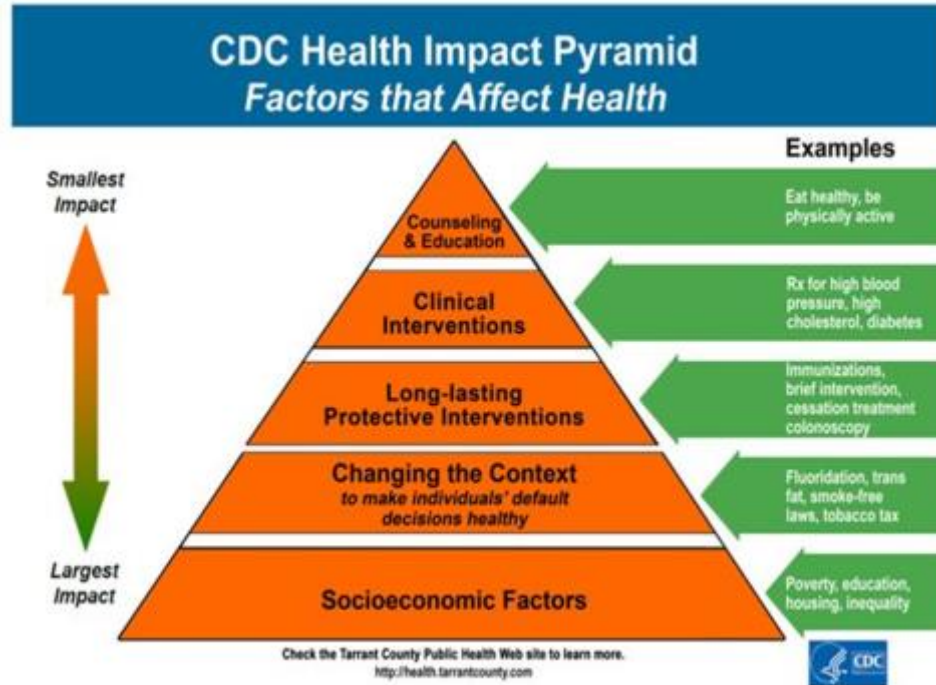
Institute of Medicine Report

- 2002
- *Unequal Treatment: Confronting Racial and Ethnic Disparities in Health Care*
- Prompted efforts to document and understand health disparities in the U.S.

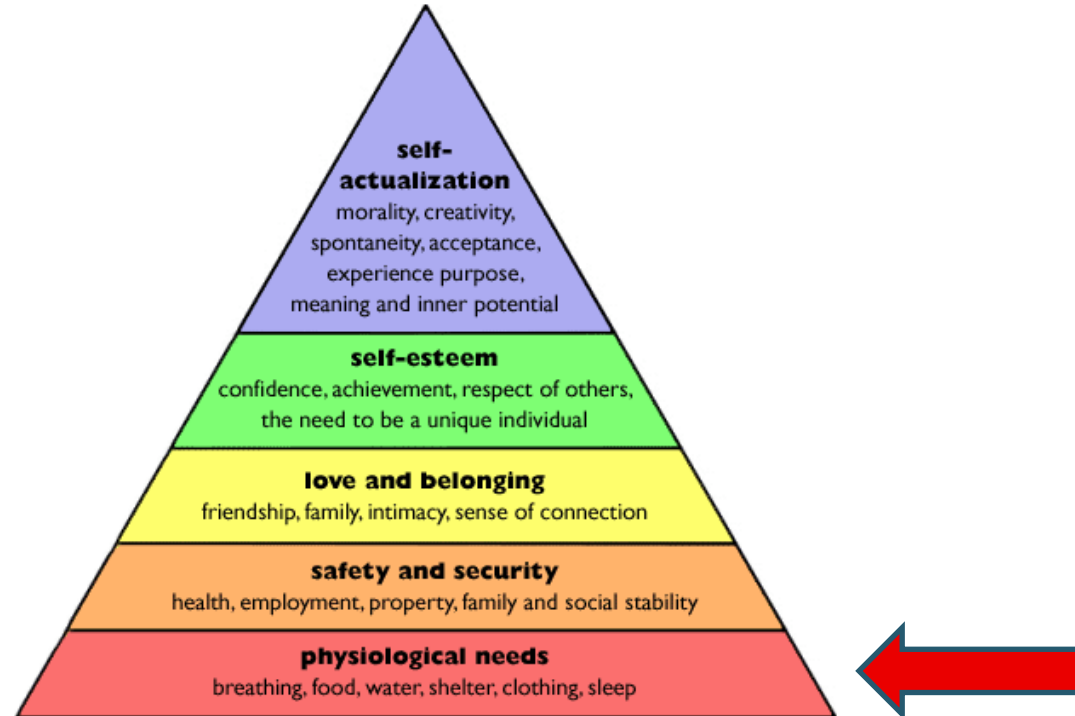
The Big Picture



Health Impact Pyramid



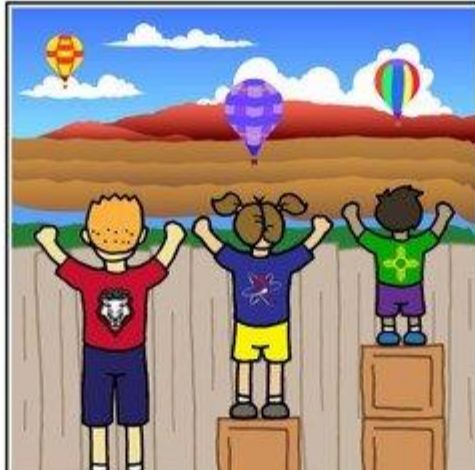
Maslow's Hierarchy of Needs Theory



Equality



Equity



Empowerment

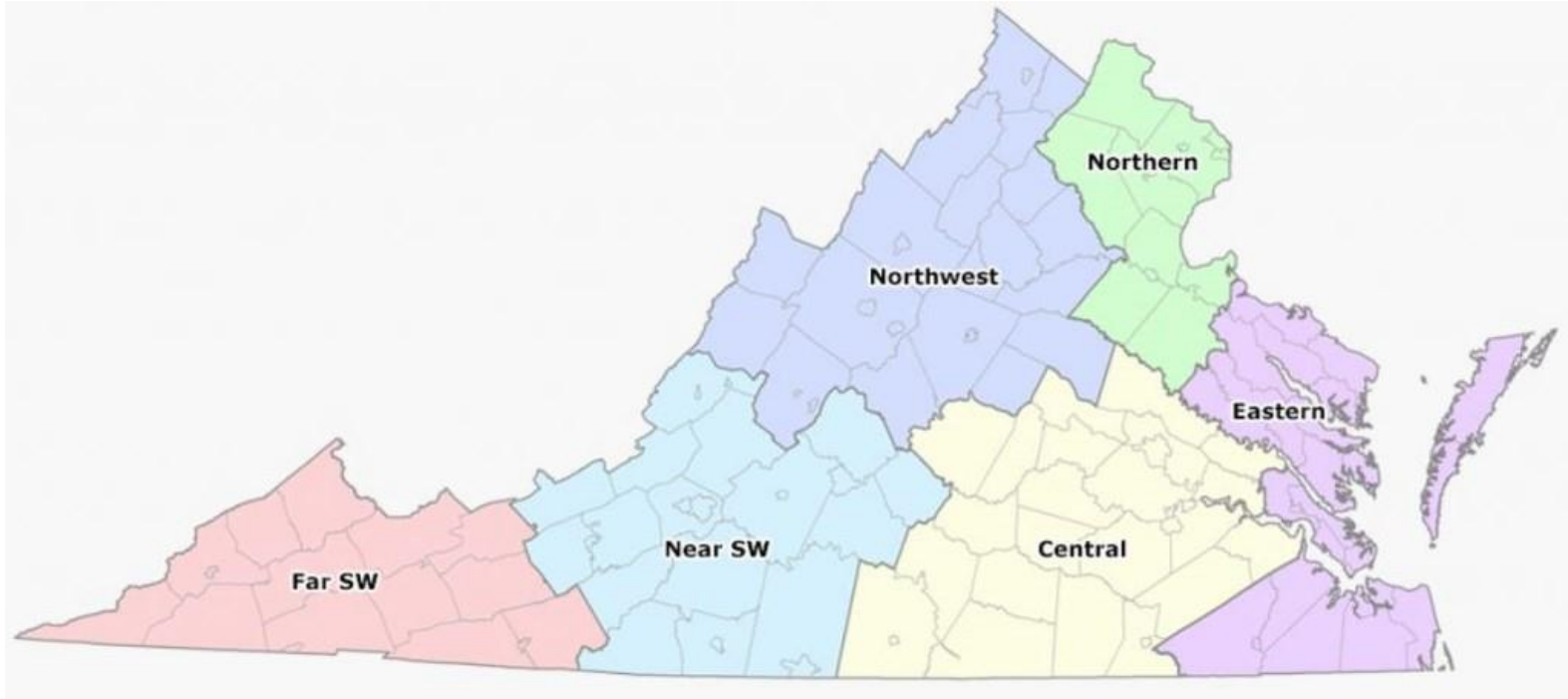


Health equity is defined as the absence of unfair and avoidable or remediable differences in **health** among population groups **defined** socially, economically, demographically or geographically.”

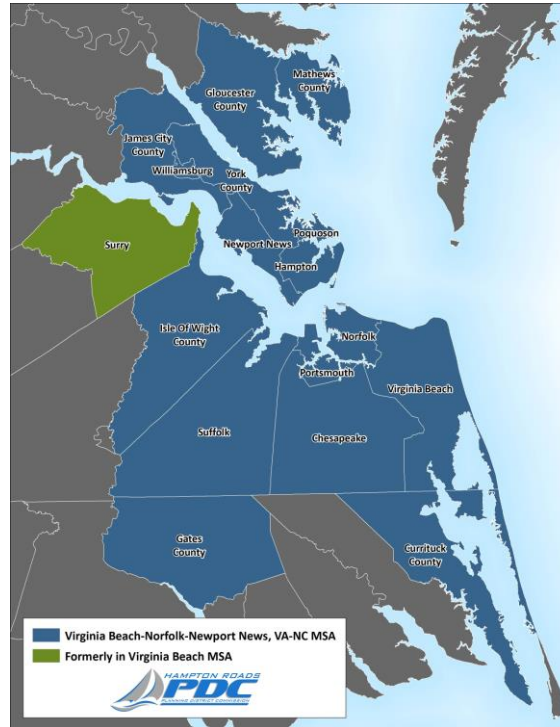




Virginia Healthcare Regions



Hampton Roads Metropolitan Service Area



Demographics

□ Hampton Roads

□ 1.8 million

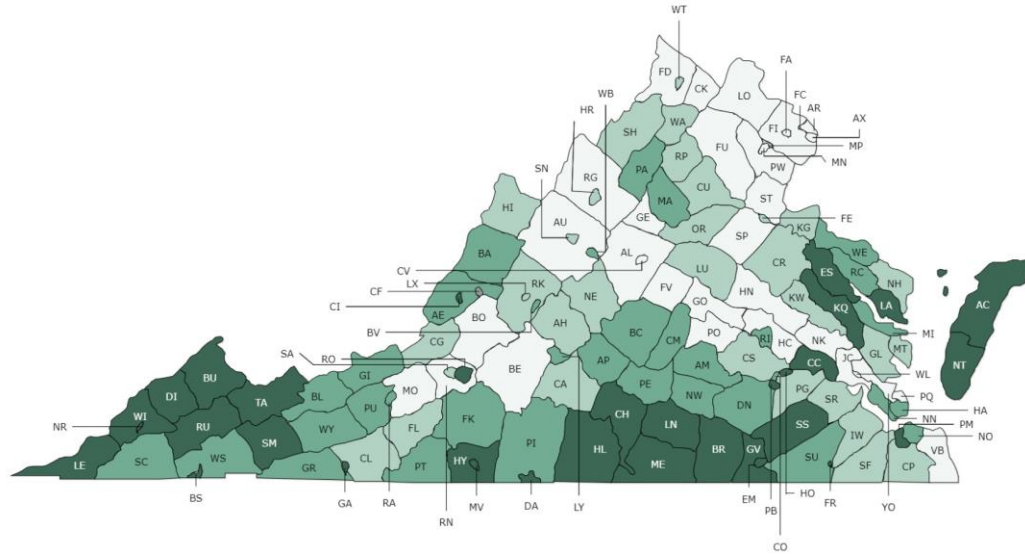
- Non-Hispanic White 52.6%
- Black/African American 30.2%
- Hispanic 10.2
- Asian 4.3%
- American Indian/Alaskan Native 0.5%
- Native Hawaiian/Pac. Islander 0.2%

□ Virginia

□ 8.6 million

- Non-Hispanic White 60.2%
- Black/African American 19%
- Hispanic 10.2
- Asian 7.2%
- American Indian/Alaskan Native 0.6%
- Native Hawaiian/Pac. Islander 0.1%

Virginia Health Outcomes Map 2023

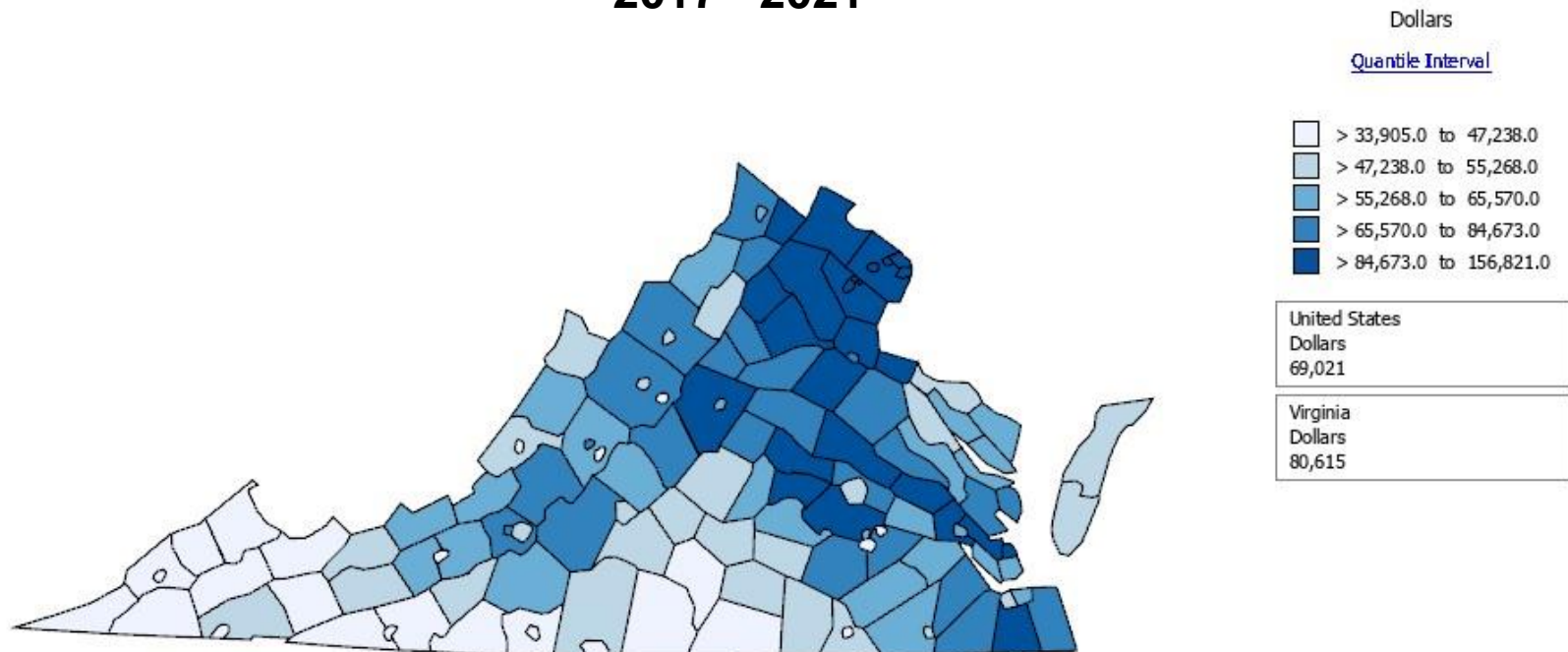


Health Outcome Ranks

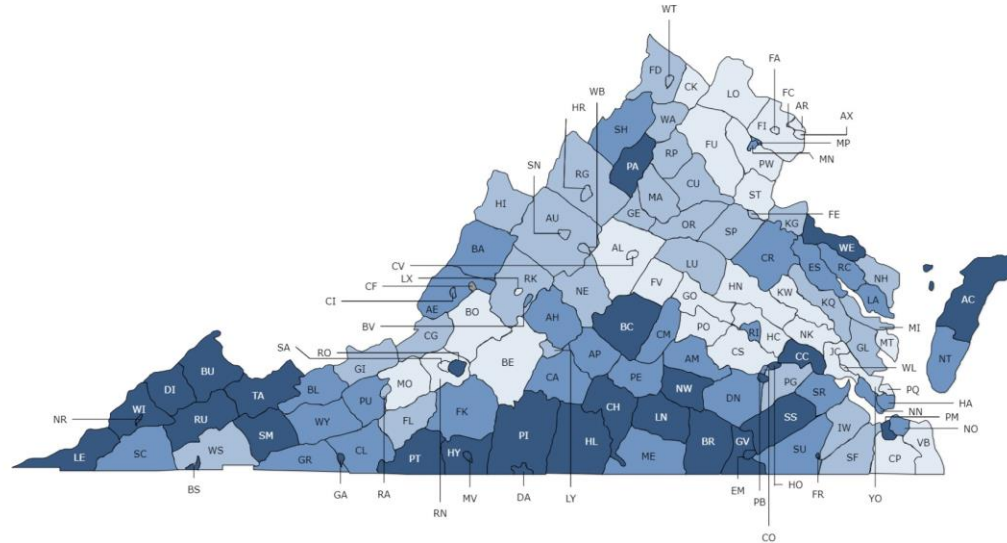
1 to 33	34 to 66	67 to 100	101 to 133
---------	----------	-----------	------------

Median Household Income by County

2017 - 2021



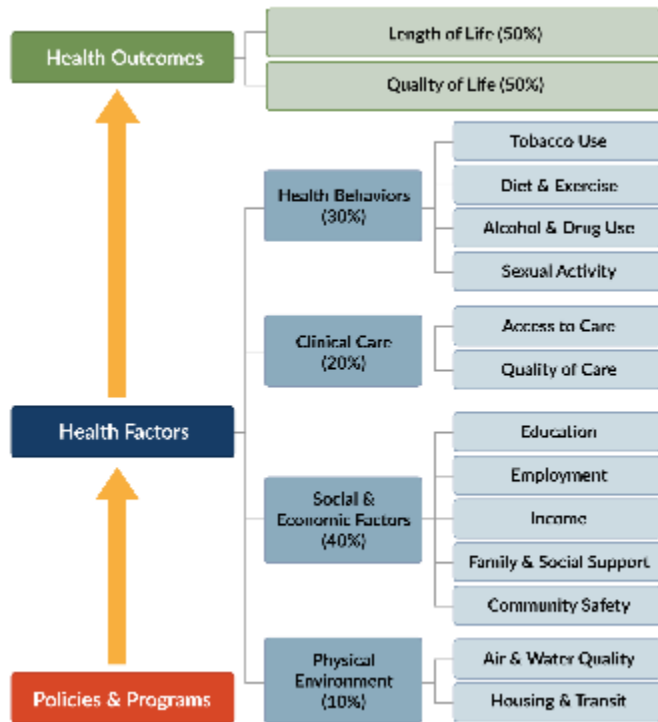
Virginia Health Factors Map 2023



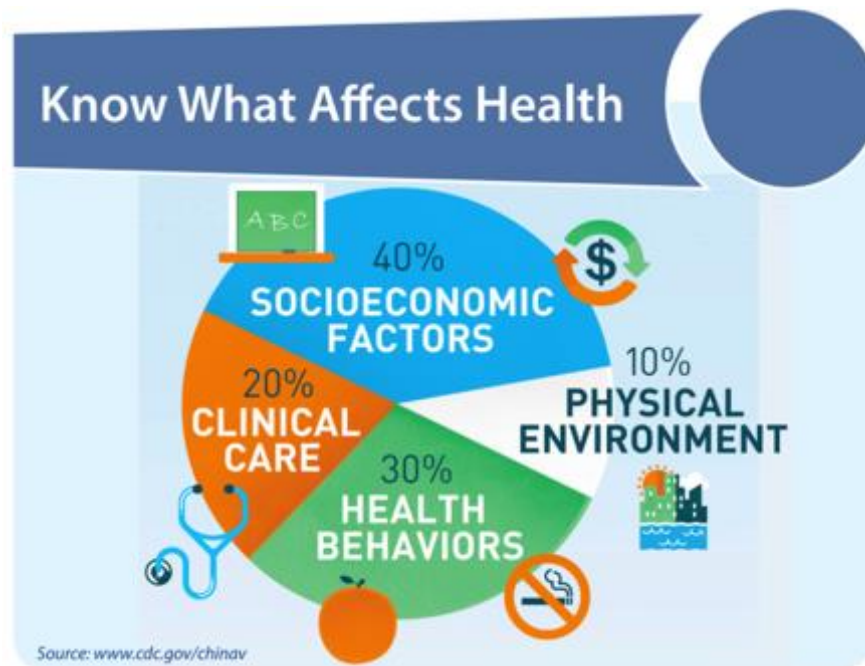
Health Factor Ranks

1 to 33	34 to 66	67 to 100	101 to 133
---------	----------	-----------	------------

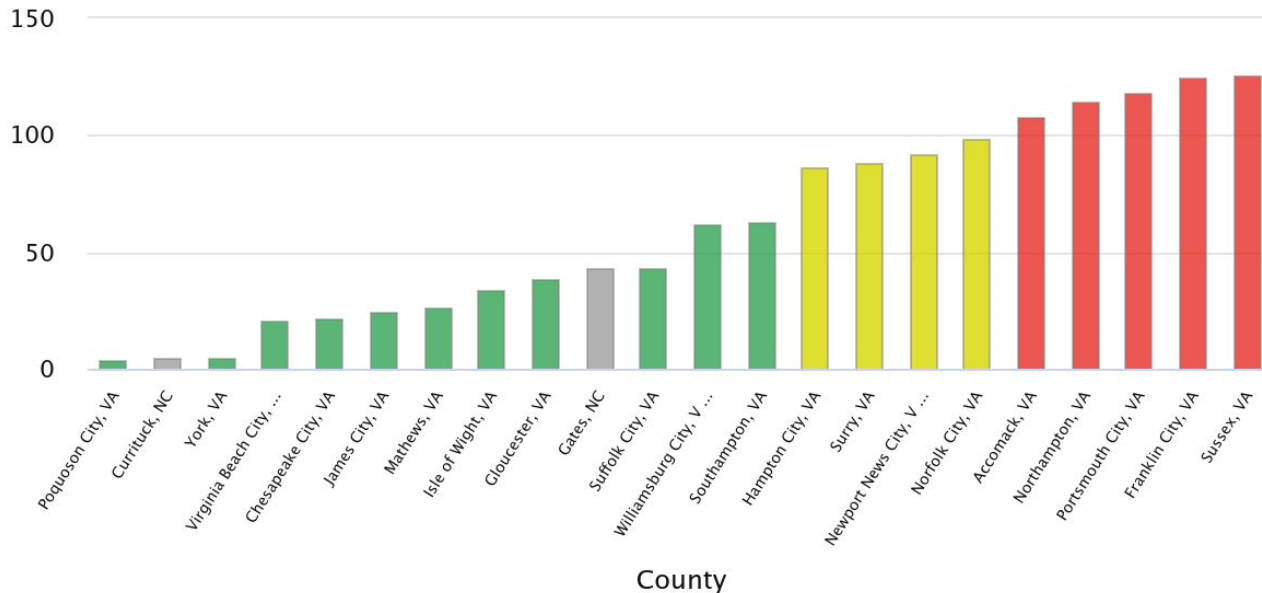
County Health Rankings & Roadmap Model



The Big Picture



Social and Economic Factors Ranking



Best 50th Percentile
< 67

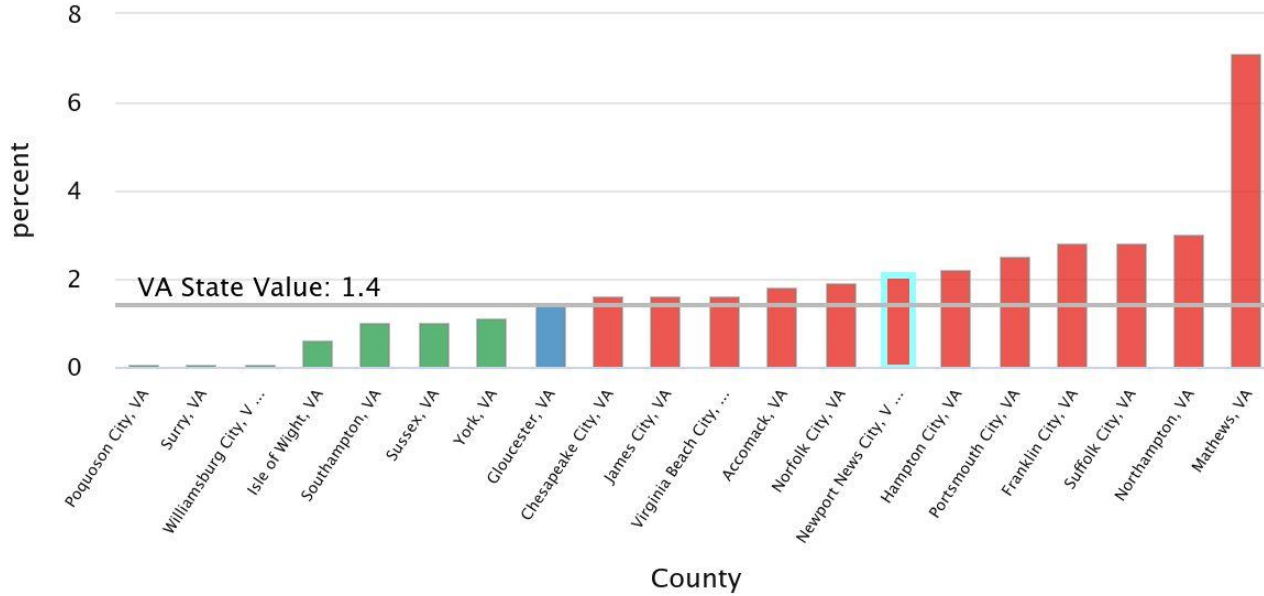
50th to 75th Quartile
67 - 100

Worst 25th Quartile
> 100

N/A

Source: County Health Rankings (2023)

Babies with Very Low Birthweight

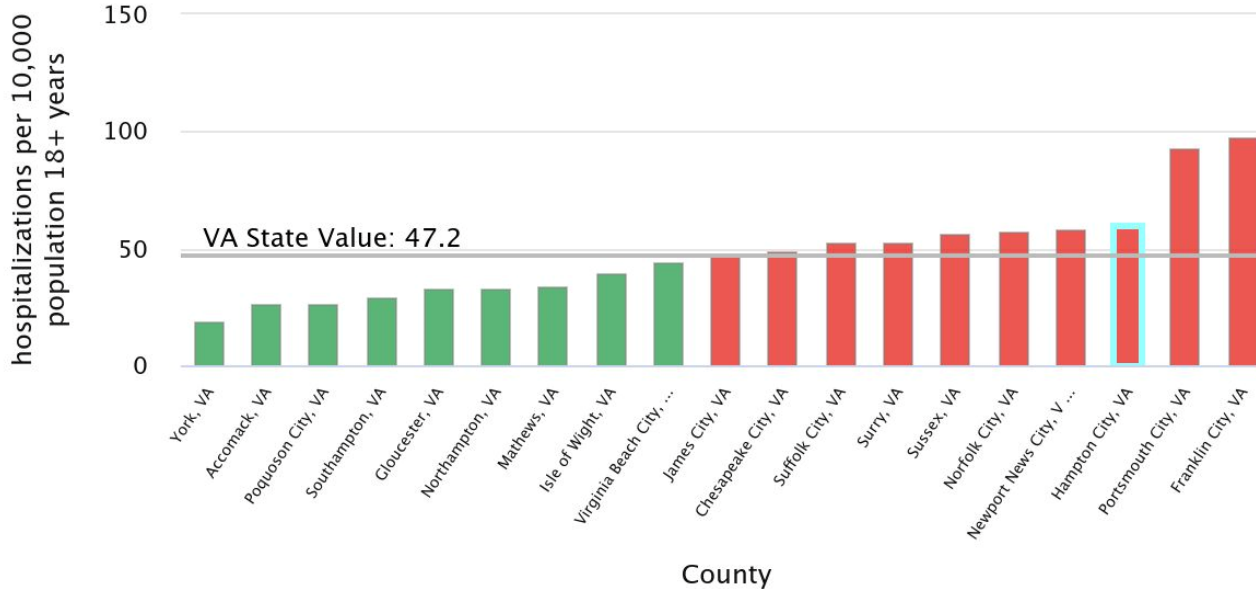



< 1.4%


= 1.4%


> 1.4%

Age-Adjusted Hospitalization Rate due to Adult Mental Health

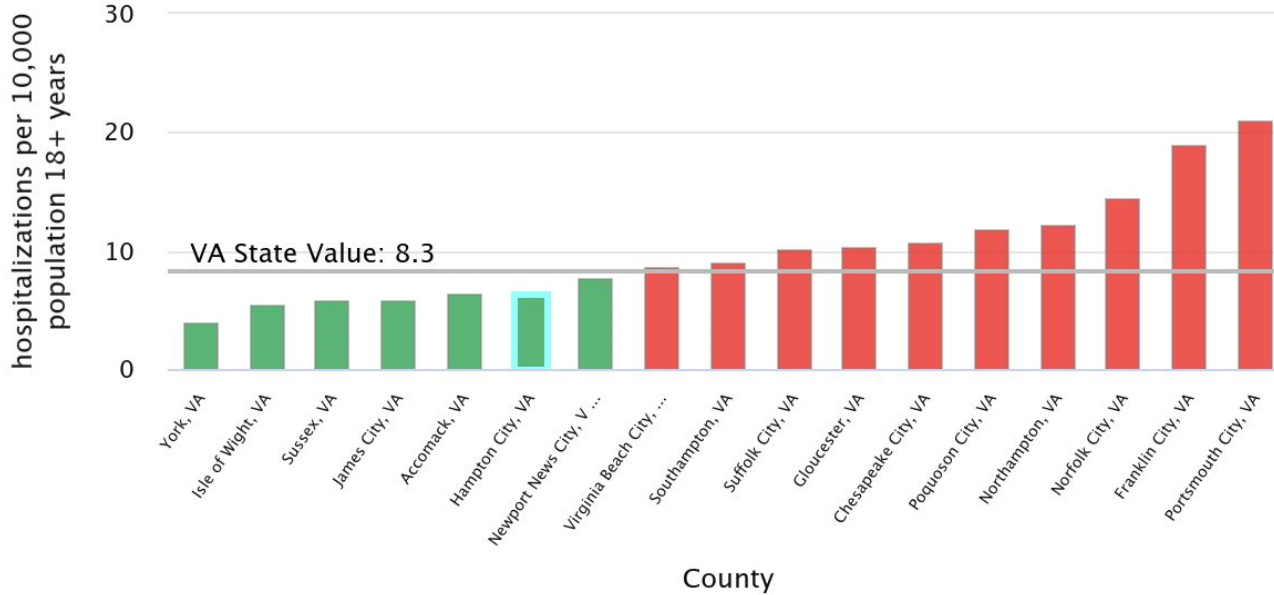



< 47.2


= 47.2


> 47.2

Age-Adjusted Hospitalization Rate due to Substance Use

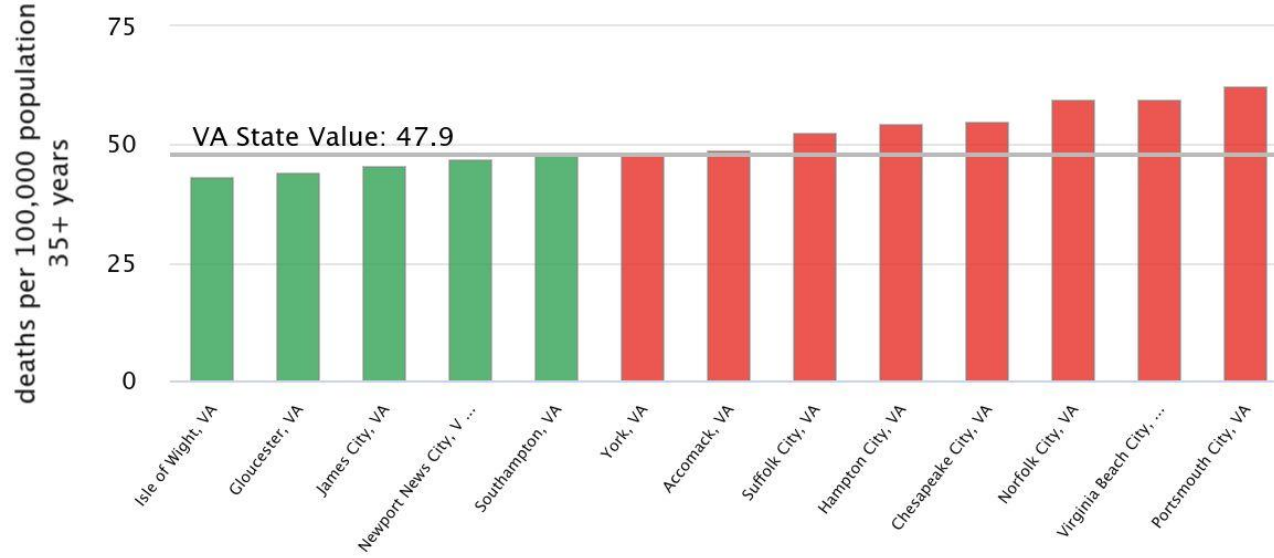


< 8.3

= 8.3

> 8.3

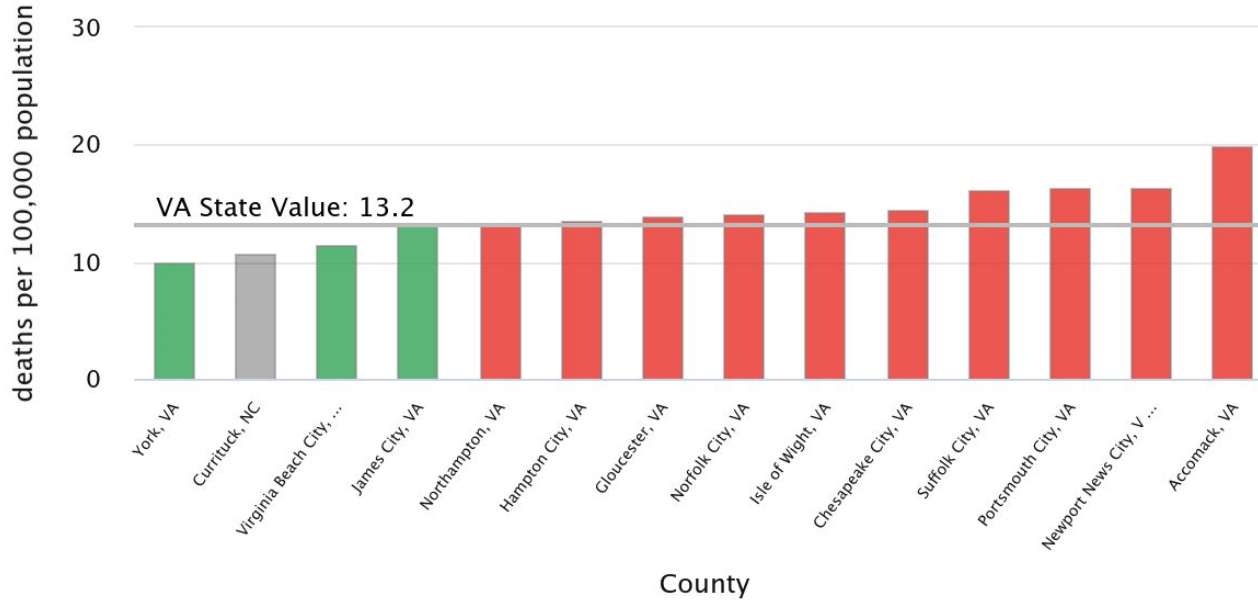
Age-Adjusted Death Rate due to Heart Attack



County



Age-Adjusted Death Rate due to Colorectal Cancer




< 13.2


= 13.2


> 13.2


N/A

Eliminating Health Disparities:

Does everyone have a role?

- YES! Individually and collectively
 - Different roles
 - Variety of voices
 - VIPs
 - Very Important People
 - Vital Informative Perspectives

RISE TO HEALTH COALITION

- ❑ American Hospital Association
- ❑ American Medical Association
- ❑ Institute for Healthcare Improvement
- ❑ National Association of Community Health Centers
- ❑ National Committee for Quality Assurance
- ❑ Others: www.risetohealthequity.org

RISE TO HEALTH COALITION

- Patients want systems that treat them with dignity and respect
- Hospitals and clinicians want systems that incentivize and reward whole-person care
- Payers want incentives or financing to help address social drivers of health
- Community organizers want trusting co-equal partnerships

Advancing Health Equity:

Do Advanced Practice Providers have a role?

- **YES! Individually** as the best clinicians for patients
 - Trusted environment
 - Engage in conversation
 - Build on relationships
 - Be bold in accountability

Advancing Health Equity:

Do Advanced Practice Providers have a role?

- YES! **Collectively** as part of interdisciplinary teams
 - health in all policies beyond clinical settings
- Trusted environment
- Engage in conversation
- Build on relationships
- Be bold in accountability

Advancing Health Equity and Improving Community Health:

Can YOU Play a Role?

□ YES!

- Virginia's Plan for Well-Being
- Engage with Everyone
- Consider consequences of discriminatory practices and policies
- Understand the impact of policies on underserved populations
- Use a data-driven approach

<https://www.countyhealthrankings.org/online-and-on-air/blog/eight-ways-to-advance-health-equity>

Advancing Health Equity and Improving Community Health:

Can WE Play a Role?

□ YES!

- Be aware of systematic barriers
- Work with small businesses
- Understand the role housing plays in health
- Build social connections
- Drive to make Virginia the healthiest state in the nation

<https://www.countyhealthrankings.org/online-and-on-air/blog/eight-ways-to-advance-health-equity>

“Be the change you wish to see in the world.”

-Mahatma Gandhi

Thank You!