



RIVERSIDE | 100
1915-2015
Years

CARING FOR OUR COMMUNITIES FOR A CENTURY AND BEYOND



2016 ANNUAL REPORT

THE DIFFERENCE
YOU MAKE IS REMARKABLE



Riverside's Commitment to our Communities

As a not-for-profit organization, Riverside is firmly committed to supporting our community partners. These are the organizations that extend our health improvement mission through educational programs, community gatherings, screenings and wellness initiatives. And we're absolute in our commitment to provide much needed health care to thousands of uninsured and underserved patients in our communities. To that end, Riverside Health System provides millions of dollars each year in community benefit investment and support to the community including in-kind and charity care provided to those unable to pay for medical services. To learn more about Riverside's commitment to our communities please visit www.riversideonline.com/community_benefit.

Table of CONTENTS

A Message from Conway Sheild, III	3
Riverside Foundation Board of Directors and Staff	4
2016—It Was a Remarkably Good Year: The Executive Director	5
Patriots Colony Celebrates 20th Anniversary	6-8
Nadine Katona, Volunteer Extraordinaire	9
New Riverside Shore Memorial Hospital Opens	10-11
Memorial Gift Celebrates Couple's Life Together	12-13
Emorys Make Giving Back Part of Life	14-16
Meet the Doctors that Patients Never See	17-19
Annual Donors	20-33
Gratitude Gifts	34-36
Honorary Gifts	37-38
Memorial Gifts	39-41
Heritage from the Past: Focus for the Future	42
Nick DeWeerd—Millennial on the Move	43
Nichollette Amburgey—from Dancer to Teacher	44
Scholarship Funds Award Four 2016 Scholarships	45-46
Financial Update	47

Cover Photo (l-r): First Patriots Colony residents and staff toast 20th Anniversary

Seated: Vern Williams, Jamie Blackburn, Gerta Smith, Phyllis Jay, Marty Hansen, Mary Ross Rathbun, Lee Rathbun

Standing: Danielle Lewars (staff), Gail Paige (staff), Miriam Lamb, Nancy Bull, Terry Hall (staff)

Not pictured: Chuck Adsit, Gerri Cannon, Marion Robinson, and Diana Palmer (staff)

Opportunities and Challenges for the Future

A MESSAGE FROM CONWAY SHEILD, III

2016 was a year of remarkable growth and achievement for the Riverside Foundation both in terms of increased revenues and in the impact your generous support had on improving health care for the communities we serve. We can look back at the last year and take pride in what we collectively accomplished and how we made a difference.

I'm happy to report, however, that we will not be "resting on our laurels" in the coming years. Quite the contrary, the Foundation board and the professional staff have been hard at work evaluating our strengths and weaknesses, and how we can move strategically to take advantage of opportunities and meet the challenges the Foundation may face in the future. For example, we are partnering with Riverside's corporate communications and marketing team to develop a more effective and comprehensive plan for communicating with our internal partners and our external constituents.

We've also taken a careful look at how we can direct the Foundation's resources and your generous support to areas having both the greatest needs and providing the maximum potential for making an impact. We've focused on four such areas as opportunities for growth in 2017 and beyond. The first is **Cancer Care**. The second is Riverside's **Healthy Aging** service programs—a prime growth area. **Neuroscience** is the third area on which we'll focus, and the fourth is **Education**, including scholarship support.

The coming years hold great promise for the Foundation. Please join me in supporting Riverside — a remarkable community asset.

Sincerely,
Conway Sheild, III, *Riverside Foundation Board Chairman*



Conway Sheild, III, *Chairman*

For more information about how you can make a difference through your gift of gratitude, call the Riverside Foundation at 757-234-8740 or visit us online at www.riversideonline.com/foundation.

Riverside Foundation Board of Directors



Conway Sheild III,
Chairman



Patricia Barry, MD



Frances Ellis



William M. Grace



Caramine Kellam



Ron Murray



Verneeta L.
Williams, MD

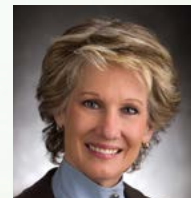
Riverside Foundation Management and Staff



William B. Downey,
*President and
Chief Executive
Officer*



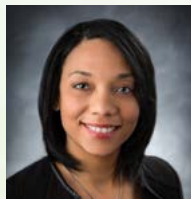
W. William
Austin, Jr.,
*Chief Financial
Officer*



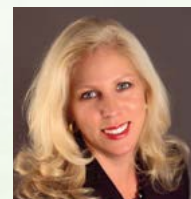
Faye Petro Gargiulo,
*Vice President, Research
& Development,
Physician Recruitment
and Foundation*



Debbie Atkinson,
Executive Director



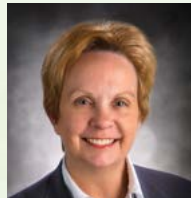
Crystal Gregory,
*Director of Gift
Planning*



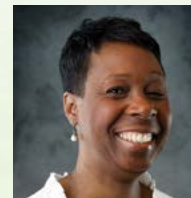
Jennifer Frank,
*Major Gifts
Officer*



Brenda Spivey,
*Development
Coordinator*



Sandy Hennessy,
*Development
Associate*



Pamela
Dix-Parker,
*Development
Associate*

2016—It Was a Remarkably Good Year

THE EXECUTIVE DIRECTOR

Our donors are the heart of the Riverside Foundation, and I am especially proud to present this Annual Report to you. The positive impact your generous support has made on so many lives in the communities served by Riverside has never been greater! In fact, I will say 2016 was a **remarkable** year. I would like to draw your attention to page 47 of this report where you will see that because of your support we were able to invest more than \$1.5 million to improve facilities, provide patient assistance, give support to vital programs, and provide scholarships to students in need of financial help.

Clearly, success of this magnitude doesn't happen by accident. It's achieved when Riverside's compassionate caregivers fulfill our mission *to care for others as we would care for those we love*, when the Riverside Shore Memorial Hospital Auxiliary and the various Riverside Hospital volunteers work year-round to raise dollars to support projects of vital importance in their communities, and when grateful patients, loved ones, businesses, and civic organizations come together to support a cause. To all of them and to all of you, we are most grateful.

Please don't hesitate to call me at 757-234-8740 if I can be of service in your gift planning. With great regard and respect, thank you again for all you do.

Debbie Atkinson,
Riverside Foundation Executive Director

P.S. We've changed the way we recognize our donors in the Annual Report. Instead of listing donor names by individual funds, we've adopted a simpler, more readable layout for the listings. There are just four sections: Annual Donors, Gratitude Gifts, Honorary Gifts and Memorial Gifts.



Debbie Atkinson, *Executive Director*



*Photo (l-r): Dan O'Connor,
Tsu O'Connor, Maridell Loomis,
and Hal Campell*

Common Bonds, Core Values Unite Residents & Staff **PATRIOTS COLONY CELEBRATES 20TH ANNIVERSARY**

The mood was festive, the underlying message more serious, as residents and staff gathered to celebrate Patriots Colony's 20th Anniversary. The speeches, songs and entertainments all focused on the common bonds and shared core values that make the retirement community the unique place it is.

“Patriots Colony’s relationship with Riverside dates back to the community’s earliest days when the Riverside Health System became our financial partner in 1997. In 2000, the Riverside Foundation made a \$100,000 matching donation to help launch the Patriots Fund established by the Patriots Colony Board of Directors, led by Archie Cannon, Chairman of the Board.”

—Mike Rowe, Patriots Colony Executive Director

Patriots Colony’s residents tend to have more in common with each other than those living in most retirement communities because it is one of a relatively few senior living facilities created specifically for retired and former military officers and senior government workers. As one of the original residents noted, “We share a common bond through our service to the country. In many cases, our paths had crossed long before we came to Patriots Colony.” (A dozen of the original residents and three 20-year staff members were present for the celebration.)

Leading up to the Dec. 6, 2016, celebration, a committee of 15 people spent untold hours planning the Anniversary program and theme. The group eventually settled on a theme focused on six “core values” they believe give Patriots Colony its unique character. These values—**Individuality, Vitality, Community, Service, Respect, and Family**—were interpreted in six paintings by Richmond artist Emily Herr, which were unveiled during the Dec. 6 celebration. As another of the original residents said, “The whole presentation was a wonderful expression of the things that make us one family, caring for each other and giving to each other.”

PATRIOTS COLONY’S HISTORY

The history of Patriots Colony and its success is inexorably tied to one man—Maj. Gen. Archie S. Cannon, Jr., who passed away in 2010. Cannon first became involved in the Patriots Colony project in 1988 when a group of retired military officers approached him to help plan and develop the concept. As he told the story in a 2004 Virginia Tech Magazine article, “I was approached by a couple of retired Army colonels who were interested in exploring the feasibility of establishing a continuing care retirement community for retired military officers. They felt that I could contribute to the project. But beyond that, the whole concept really excited me.”

It was Gen. Cannon or “Archie,” as he preferred to be called, who first reached out to develop a partnership with Riverside, according to Executive Director Mike Rowe. “Patriots Colony’s relationship with Riverside dates back to the community’s earliest days when the



Jerri and Archie Cannon pictured with plaque honoring the opening of Patriots Colony

Remembering Archie Cannon

Visionary. Inspirational leader. Friend and founder of Patriots Colony. After 34 years in the military, Maj. Gen. Archie Cannon devoted the rest of his life to creating and nurturing a community where those who had given of themselves in service to their country might live in comfort and the assurance of quality care in their retirement years.

“Archie” as he preferred to be called was truly the heart and driving force behind the development of Patriots Colony. The Cannon Community Center, named in his honor, is an appropriate tribute to his bold, yet gentle leadership of the community he loved.

Riverside Health System became our financial partner in 1997,” he said. “In 2000, the Riverside Foundation made a \$100,000 matching donation to help launch the Patriots Fund *established by the Patriots Colony Board of Directors, led by Archie Cannon, Chairman of the Board.*”

As he did with so many aspects of the community’s early development, Archie Cannon pushed for the establishment of the Patriots Fund “to support the continuation of the ‘Caring Family’ tradition existing at Patriots Colony.” With his characteristic common sense and compassion, Cannon believed strongly that the fund was necessary to meet the needs of residents who [might] through no fault of their own experience financial difficulties. “He always held to the vision of Patriots Colony as more than just a place to live. It was to be a community where caring for each person individually and as part of the family was the primary goal,” Mike Rowe said.

MAKING A DIFFERENCE THROUGH GIVING

The residents of Patriots Colony have a long history of generosity. Since the very beginning, they’ve given of their time, talent and treasure to care for each other in moments of need. The Riverside Foundation is proud to have been a part of this giving spirit and looks forward not only to continuing but also to expanding its support of charitable giving opportunities. ***For more information on how you can make a difference at Patriots Colony through your charitable gift, contact the Riverside Foundation at 757-234-8740.***

She's 92 and Making a Difference in People's Lives

NADINE KATONA, VOLUNTEER EXTRAORDINAIRE

If you're a patient checking into Riverside Tappahannock Hospital and your timing is right, you'll be greeted by one of the most extraordinary people you're likely to meet anytime, anywhere. Nadine Katona is a vibrant 92 years old, and works one day a week as a volunteer admitting patients and ushering them to wherever they need to go in the hospital.

Maybe the most remarkable thing about this utterly charming, self-effacing woman is that she'd never use the word "remarkable" to describe herself. "I just really like people, meeting them, working with them and perhaps making a difference in their lives," she said. "I started doing volunteer work after my two sons were old enough to be on their own a bit. We were living in western New York. A local church started a 'Meals on Wheels' program. I did volunteer work with them for 25 years."

Nadine grew up in a small rural town outside Cleveland, Ohio, and moved to western New York after marrying her late husband Alex. "It was a little town of about 1,500 people," she said. "We had one traffic light and the big thing to do on Halloween was to put a cow on the second floor of the high school. It was the 1940's and life was simpler back then." In 2007, she and husband Alex moved from New York to Tappahannock to be closer to one of their sons. Alex passed away shortly after that, and Nadine applied for volunteer work at the hospital. "I've always been active. I like to walk, to exercise, to keep busy," she said. "And as I said before, I really like people."

A self-described "Damn Yankee," she's right at home in Tappahannock. "I know I'm a 'come here' but that doesn't bother me. This is a welcoming community, and this is the friendliest hospital I've ever seen. Whether they are patients or staff, people passing in the halls greet each other with smiles and a 'how are you.' I plan to keep volunteering here at the hospital as long as I'm able," she said.



Nadine Katona

Make a Difference. Become a Riverside Volunteer.

If you'd like to join Nadine Katona and hundreds of other people who've discovered the rewards of being a Riverside Volunteer, please contact the appropriate Volunteer Coordinator at your Riverside community hospital. Join our Riverside team as a volunteer and help us fulfill our mission *to care for others as we would care for those we love.*



**\$520,000 From Auxiliary
Funds Kellam Heart Center**
**NEW RIVERSIDE
SHORE MEMORIAL
HOSPITAL OPENS**

The new \$85 million Riverside Shore Memorial Hospital officially opened on Feb. 25, 2017, but a major highlight of 2016 was the Shore Memorial Auxiliary's achieving its \$520,000 fundraising goal (its largest single gift ever) to help finance the Dr. Lloyd J. Kellam Heart Center within the hospital.

“It’s the largest gift we’ve ever made, and we’re really excited about making such a significant contribution to health care on the Shore. Dr. Kellam is our only cardiologist. Almost every family has been touched by him in some way. We felt it was important to recognize his contribution to the community.”

—Jane Bulette, President, Shore Memorial Hospital Auxiliary

The new medical campus in Onancock—to be called Riverside Shore Medical Services—brings together in one location the hospital, the Riverside Shore Cancer Center and Riverside medical offices for specialty physicians as well as outpatient physical therapy. The move from the old hospital to the new facility took place on Feb. 25 as planned and without any major problems. “Transitioning patients from one hospital to another was a big undertaking,” John Peterman, administrator of RSMH and vice president for the Eastern Shore, said of the inpatient move. “We had planned for this day for more than a year.”

The opening of the new hospital included yet another milestone for the much honored Shore Memorial Hospital Auxiliary. As 2016 came to an end, the Auxiliary had raised the \$520,000 to fund a new full-service Heart Center on the first floor of the hospital, which is named in honor of Dr. Lloyd Kellam. “It’s the largest gift we’ve ever made, and we’re really excited about making such a significant contribution to health care on the Shore,” said Auxiliary President Jane Bulette. “Dr. Kellam is our only cardiologist. Almost every family has been touched by him in some way. We felt it was important to recognize his contribution to the community. We’re also grateful to the E. Polk Kellam Foundation for a generous contribution that enabled us to reach our goal more than a year ahead of schedule.”

The Heart Center consolidates diagnostic and treatment facilities in one location on the hospital’s first floor. In the old hospital, patients had to go from the first floor, where they underwent stress testing, to the third floor for nuclear medicine scans. It also includes more space for cardiopulmonary rehabilitation, some of which currently takes place at the YMCA in Onley. Dr. Kellam noted that a new building and the latest technology will be exciting, but it’s not only about the building. “Medicine on the Shore has always been more about the people delivering the health care. We focus on treating our patients as though they were members of our own family,” he said.

Over the years, Auxiliary funds have helped to pay for construction of the Riverside Shore Cancer Center, scholarships, redecorating projects, landscaping and hospital equipment. The American Hospital Association has recognized the Auxiliary for “dedicated and distinguished service on behalf of the hospital.”

To learn how you can contribute to health care on the Eastern Shore, contact us at 757-234-8740.



Photo (l-r): Phil Yosway with granddaughter Emily Herr

Phil and Frances Yosway— Their Enduring Love **MEMORIAL GIFT CELEBRATES COUPLE'S LIFE TOGETHER**

After his wife died, Phil Yosway searched for a way to honor her and their life together. A memorial gift fulfilled his wish while providing support for Patriots Colony's 20th Anniversary celebration and helping to launch the "Music & Memory" program at Springhouse, the community's memory care center.

“She was the love and light of my life and I owe all my success and happiness to her,” he said. “My gift was a tribute to her, as well as an expression of gratitude for the care she received at Springhouse, and the happy years we spent together at Patriots Colony.”

— Phil Yosway

Phil and Frances took a big risk for the sake of love when he and his “sweetheart” were married two and half months before he completed his Navy flight training in 1955. It was a risk he never regretted. He and his beloved wife Frances spent more than 60 joyous years together until her passing in 2016. “She was the love and light of my life and I owe all my success and happiness to her,” Phil said. “My gift was a tribute to her, as well as an expression of gratitude for the care she received at Springhouse, and the happy years we spent together at Patriots Colony.”

The young lovers successfully hid their marriage until Phil completed flight training and then began the typical travelogue that’s SOP for military families. They moved from Trinidad to Panama to Bermuda as he completed his first two years of active duty. After he became “regular Navy,” the couple moved from assignment to assignment, including a position at the Pentagon and command of a base on an island off the coast of India. He retired in 1982 and went to work for a “Beltway Bandit” for 10 years.

In 2006, Phil and Frances began to look at moving to a retirement community. “I think one day we just realized we didn’t really want to keep on with the maintenance, the yard work and all the other requirements of a suburban house,” Phil said. “We looked at places in Richmond, but a golfing mate mentioned Patriots Colony. We liked it and moved into a villa in 2007. We never regretted it once.”

Frances’s health began to fail about three years ago. “She was suffering from dementia. As she deteriorated I took care of her for about a year. She then stayed two years in Springhouse. The staff there was wonderful,” he said. “I spent every day with her, from 7:30 in the morning until 7:30 or 8:00 at night. On May 7, she died in my arms. She could hardly speak, but she managed to get out on her last day ‘Thank you for taking care of me.’ That evening I was holding her. She opened her eyes and said, ‘I love you.’”



Couple Sees the ROI
of Charitable Giving
**EMORYS MAKE
GIVING BACK
PART OF LIFE**

They're bright, attractive, hardworking and successful. But perhaps the thing that's most striking about Theresa and Roger Emory is their deeply held sense of obligation to share what they call their "good fortune" by investing in the health and welfare of the community in which they live.

“My hope would be that anyone touched by Riverside for whatever reason, whether you work there or may have been a patient there, would get involved by giving back. Try it. Every gift can make a difference in someone else’s life. And you’ll get a whole lot more back than you gave. You really will.”

— Dr. Theresa Emory

They are both doctors. She’s a pathologist and partner at Peninsula Pathology Associates, the pathology group that serves Riverside. He’s a plastic surgeon in private practice in Williamsburg. Their personal and professional lives have been closely intertwined since they met in medical school (Eastern Virginia Medical School in Norfolk) 32 years ago. They were both in med school on military scholarships. They married while still in Norfolk. Both of them had military obligations to fulfill after finishing med school and ended up for a brief time living in California before base closings there enabled them to finish their training at the renowned Mayo Clinic.

Following some time living and working in Washington, D.C. to finish up their military commitments, the couple moved to Abingdon, a small picturesque town in the mountainous western part of Virginia that’s perhaps best known as the home of the Barter Theatre. It was in Abingdon that the couple discovered the rewards of giving to support important needs in the community. “Abingdon is a beautiful little town, a great place to raise children and a community where even a small contribution can have a big impact on people’s quality of life,” Roger said. “I became involved with Barter Theatre. I mean here’s this terrific theatre with great acting in this small town. We loved it.”

They also became leaders in encouraging more kids in the area to go to college, raising scholarship funds for students who were going to enroll at the University of Virginia, Theresa’s alma mater. “When we first came to Abingdon, there were very few high school students going on to college and only one or two going to UVA. By the time we left, many more students were going to college and as many as ten to fifteen were attending UVA,” Theresa said. “We probably had raised \$70,000 for scholarships by the time we left. And students were going to colleges other than UVA.” Their experience in Abingdon led the couple to take a more formalized approach to giving. “We sat down one night and made some decisions about what role community involvement would play in our lives, and how we’d invest our money to achieve the greatest good,” Roger said.

Then, changes in the pathology group of which Theresa was a partner, led to their leaving Abingdon and settling in Williamsburg. Roger opened his office and Theresa joined Peninsula Pathology Associates. “Coming to Williamsburg was a very good move in many ways,”

Theresa said. “Roger is a William & Mary grad and his family still lives in Virginia Beach.” As they had done in Abingdon, Roger and Theresa began to explore the charitable causes in which they might become involved. “I didn’t know anything about the Riverside Foundation when we first moved here, but somehow I just knew there had to be one. We really liked Riverside’s philosophy, its focus on patient care, and especially the way it has been able to operate as a large system, but keep the intimacy and community feeling in each of the hospitals.”

The couple’s first contribution to the Foundation was a trust gift. “When we first arrived, we were starting all over again as far as work was concerned, so an immediate donation wasn’t possible; at the same time, we wanted to support the remarkable work of Riverside and the Foundation. The trust was ideal,” Roger said. They later made an additional gift to the Sanctuary at the Pavilion.

“We learned the importance of giving and the impact it can have. If everyone makes even a small gift, you can change so much. My hope would be that anyone touched by Riverside for whatever reason, whether you work there or may have been a patient there, would get involved by giving back. Try it. Every gift can make a difference in someone else’s life. And you’ll get a whole lot more back than you gave. You really will.”

LET US HELP YOU FIND A PLANNED GIVING OPTION THAT’S RIGHT FOR YOU.

As Theresa and Roger Emory discovered, there are a variety of Planned Giving options that let you include a charitable donation as part of your overall estate planning. Whether it’s a trust fund, an inclusion in your will or a stock transfer, a planned gift lets you give back to the community while retaining use of your financial resources as long as you live. To create a plan that works for you contact the Riverside Foundation at 757-234-8740.



Photo (l-r) Theresa S. Emory, MD; Michael A. Schwartz, MD; Damian J. Tagliente, MD; Lucy E. DeFanti, DO; David M. Smith, MD; and John C. Maddox, MD (seated)

Giftng a Way to Connect
to Patients for PPA Doctors
**MEET THE DOCTORS
THAT PATIENTS
NEVER SEE**

Deep in the crisscrossing halls and myriad doorways in Riverside Regional Medical Center's labyrinthine basement level, you'll eventually come upon the offices and laboratory of Peninsula Pathology Associates (PPA), workplace for the most important group of doctors that patients almost never see.

“Each of us had personal reasons for making a gift to Riverside, but a common feeling was that we don’t have the direct connection to patients we’d like because of the nature of our work. This gift is a way to say we really do care about them in a personal way.”

—Dr. David Smith, President & Lab Medical Director

If you’ve ever gone to a physician for any reason from a major disease like cancer to a routine check-up, chances are there’s another doctor—one you’ve never met, seen or even talked to—who has examined at least a small part of you in microscopic detail. Pathologists are the doctors other doctors call to help diagnose disease, solve medical problems or determine the general state of your health by examining body tissue and fluids using the latest diagnostic tools available. You may have no contact with them, but they are an essential part of your health care team.

The six PPA partners recently made substantial individual contributions to the Riverside Foundation in the name of Peninsula Pathology Associates. Practice President David Smith, MD, said, “We weren’t structured to make a direct donation from the practice, but we all wanted to give financial support to Riverside Foundation. PPA has a relationship with Riverside that spans a half-century, and all the partners both admire and share its patient-centered philosophy.” He said that the initial idea for the donation came from Theresa Emory, MD, one of PPA’s partners. “Theresa brought the suggestion to us; we all agreed it was something we should do. I then spoke to Debbie Atkinson about how to proceed.”

“I haven’t been here very long, but I knew from work with previous groups that health systems had foundations to provide support to patients for things not covered by insurance. I was familiar with the good work they do,” Dr. Emory said. “I talked with Debbie Atkinson and found that Riverside Foundation’s vision and purpose was in line with my own professional vision and thoughts about humanitarian efforts. So I shared it with my partners.”

The other partners had their own personal reasons for supporting the mission Riverside and the Foundation are committed to fulfilling. For Dr. Damien Tagliente, the newest member of the group, it's a chance to give something to his new community. "I'm new and just out of training. I'm putting down roots here. It was a chance to support Riverside and the community I now live in," he said. Another younger partner, Dr. Lucy DeFanti said, "I've only been here a year and a half, but I know there are lower income patients who need financial help. We work with patients who have serious cancer diagnoses and we all need to help them." Participating in the gifting was a particularly personal desire for Dr. Michael Schwartz. "One of our partners, [Dr.] Jacque Legler, died of cancer shortly after he retired, so my contribution was very personal. Besides, making contributions to the community has been part of our commitment for a long time," he said.

Dr. Smith added, "This gift is one way to say we really care about patients in a personal way. Unlike most physicians, we don't have the direct connection to patients we'd like because of the nature of our work. Debbie Atkinson mentioned the proposed new Sanctuary at the Pavilion in Riverside Regional Medical Center," he said. "This seemed to be a perfect project for our group. We're proud that part of our gift provided the final funding to make the Sanctuary a reality."

ABOUT PENINSULA PATHOLOGY ASSOCIATES

For more than half a century, PPA has been providing pathology services to physicians throughout Eastern Virginia from their state-of-the-art laboratory at Riverside Regional Medical Center. They are known for having the highest standards of excellence in fast, reliable service, the very latest technology and one of Virginia's most experienced and professionally qualified teams of nationally recognized pathologists.



A Note From Dr. Biral S. Amin

This year, Riverside Cancer Care has one goal in mind: to become stronger than cancer.

Our Integrative Medicine team includes experienced oncology nurses, palliative care coordinators, massage therapists, a lymphedema therapist, a yoga instructor, a dietitian, a music therapy coordinator, a pet therapist and patient navigators who manage a wide variety of needs.

The continued generosity of grateful patients and their families, and community members who care about cancer, will increase our ability to expand these Integrative Medicine supportive therapies to more cancer patients. To join us in this effort, visit riversideonline.com/foundation or simply call us at 757-234-8740.

Biral S. Amin
*Oncology Service Line Chief
Riverside Health System*

ANNUAL DONORS

Riverside is thankful to the grateful patients, loved ones, team members, organizations and business who contributed \$1,835,366 in 2016.

Stephen Abbitt and Joe Steele, III
Azza Abdel Hak, MD
Abingdon Ruritan Club
Collene Ackerson
Debra A. Acors
Ruth E. Adams
Dr. O.T. and Sandra Adcock
Donna M. Adkins
AES Consulting Engineers
John and Stavroula Alachnowicz
Dr. Edward and
Jean Alexander
James and Rebecca Alkire
Jerold and Danette Allen
Dr. Kyle and Lynn Allen
Andre Allsopp
Ameritech Test and Balance
AMGEN, USA
Dwayne Amos
Judy E. Amundson
An Achievable Dream
Analog Devices
Lena A. Anderson
Jason and Claudia Andre
Agnes D. Andrews
Gerald L. Andrews

Andrews Funeral Home, Inc.
Leoncio T. Ang
William and Cheryl Ange
Sharon W. Angle
Grace M. Angst
Anne Cutler Estate
Jack and Carol Dubbs
Steven Annis
Deserie A. Arangio
Christy L. Archer
Malcom and Margaret Armstrong
James and Amelia Arthur
Tamara N. Artis-Simmons, RN
George F. Ashberry
Patricia A. Arzadon
AstraZeneca Pharmaceuticals, LP
Margaret S. Atkins
Dexter and Debbie Atkinson
Attitudes Fitness
W. William and Rebecca Austin
Wanda M. Austin
Arthur and Paulette Aycock
Winston and Betty Baber
Mary C. Bagwell
Judge David Baime
Asia Baines

James and Tomasita Baldwin
Chaplain Vernita L. Baldwin
John P. Ball
Diane F. Baranek
Ronald Barham
Christina Barley
Barry and E. Ann Barley
Christopher Seagle and
Christina M. Barnes
Edith W. Barnes
Jennifer S. Barnes
Mr. and Mrs. Oroon E. Barnes
Cynthia G. Barrack
Drs. D. Marshall Barry and
Patricia P. Barry
Jennifer C. Barthlome
Dr. Dennie and Shawen Bartol
Maria Barton
Robson Bassett
Kenneth and Teresa Bassett
Scott Bateman
Nancy E. Bates
Charlotte A. Baudrau
BayLands Federal Credit Union
BayPort Credit Union

ANNUAL DONORS

Bayshore Concrete Products Corporation
 Claude and Judith Beasley
 Reginald and Carolyn Beasley
 Timothy and Susan Bednar
 Tina Beierly
 Cathy G. Belanger
 Michael J. Bellinger
 Jessica A. Berg
 James and Patty Bergquist
 Allison Berry
 Katie N. Berry
 Berry O. Waddy Funeral Home
 Bethlehem Presbyterian Women
 Charlie and Golden Behone-Hill
 Dr. Barrett and Theresa Betz
 Kerry and Carey Beverly
 Patricia A. Bickford
 James and Wanda Birch
 Maria L. Bird
 Barbara J. Bishop
 Frederick and Sylvia Blackmon
 Dwayne B. Blake
 Gregory C. Blake
 Joseph and Rochelle Blanchard
 Velora P. Bland
 Ronald and Betty Blevins
 Daniel Bliss
 Linda Blotter

Catherine H. Blount
 Nebretta S. Blount
 Sandra V. Blount
 Terry Blount
 Lydia E. Boike
 Anita S. Bolger
 Jerry and Phyllis Bollinger
 Mary E.C. Bolovan
 Patricia W. Booker
 Jessica M. Boone
 Richard Boone
 Trisha J. Booth
 Robert and Ingrid Borden
 Annika M. Borgstrom
 Timothy Bostic
 Linda B. Bouffard
 Carey L. Boughan
 Arthur and Sharon Bourne
 Iris A. Bowden
 P. Gray and Julia Bowditch
 Renee Bowditch
 Charles and Patricia Bowen
 Ronnie H. Bowen
 Collin G. Bowler
 Doug Bowling
 James W. Boyd
 David Boyer
 BPOE Lodge 315
 Ken and Robin Brady



The 6th Annual Riverside Tree of Lights Gala was held on November 19 at the Abington Ruritan Club. The event raised a total of \$65,000 benefitting the Riverside Walter Reed Hospital Make A Difference Fund.

Arthur and Marie Bragg
 Carolyn M. Branson
 William and Michelle Brauer
 Brigitta L. Braxton
 Tonya K. Braxton
 David Brazell
 Steven C. Briggs
 Todd Briley
 Alex R. Brings
 Eddie and Darlene Brock
 James and Joan Bromley
 Lois E. Bromley
 Aja M. Brooks, RN
 Andrea K. Brooks
 Wade and Amy Broughman
 Douglas and Betsy Brown
 Jennifer L. Brown

Kay N. Brown
 Leora M. Brown
 William and Jacqueline Brown
 Cole and Pamela Brundage
 George and Joan Bryan
 Karen M. Bryant
 Donald and Carole Buchwald
 William and Brenda Bull
 Ann Bundick
 Bundick Well and Pump Company
 Kenneth and Deborah Bunting
 Paula O. Burcher
 Robert and Alice Burgess
 Michael S. Burke
 Michele E. Burrell
 Jamey A. Burton, MD

ANNUAL DONORS

Kaila E. Butler
 Ramona Byrum
 Kathleen A. Callahan
 Gaynor L. Callis
 Hope B. Callis
 Matthew A. Callis
 CallisonRTKL, Inc.
 Margaret K. Camp, RN
 John and Carole Campbell
 Willie and Debra Campbell
 Jacqueline F. Campbell
 Melissa T. Campbell
 Dr. Robert and Nancy Campbell
 Canon Virginia, Inc.
 Cape Charles Rotary Club
 Caitlin D. Carden
 David L. Cardwell
 Addie I. Carlisle
 Walter and Dorothy Carr
 Candice R. Carroll
 Elizabeth R. Carter
 Mary Lou Carter
 George and Sharon Carter
 Carter Machinery, Inc.
 Daniel E. Cassidy
 Patricia J. Causey
 Celgene Corporation
 John and Delores Chandler
 W. Bates Chappell

Anita C. Charnock
 Angelene Chelluck
 Chesapeake Bank
 Sarah M. Chew
 Dr. Mark and Ann Chisam
 Christ United Methodist Church
 – United Methodist Women
 Leah Christensen
 Earl R. Christian
 Church of the Visitation
 City of Hampton –
 Office of the Treasurer
 City of Newport News –
 Office of the City Attorney
 Daniel and Elizabeth Clark
 James and Joann Clark
 Nancy L. Clark
 Sheronda L. Clark
 Lynda L. Clary
 Anita L. Clayton
 Mary K. Cleckler, RN
 Marie K. Coad
 George and Marcella Coates
 Lucille D. Cobb
 Dr. John and Margaret Cochran
 Cynthia W. Coffey
 Donna M. Colegrove
 Robert and Ellen Coles
 Margaret M. Collings

Coloplast
 Barbara J. Combs
 Cheryl H. Comer
 Hildegard Comer
 Community Church
 of the Nazarene
 Elizabeth W. Compton
 Robert and Joanne Coniglio
 Arlene D. Connell
 Rear Admiral Eugene and
 Joan Conner
 David J. Connito, MD
 Dr. Joseph and Joann Converse
 Linda K. Conway
 Erica R. Cooper
 Kendra J. Cooper
 CMSGT.(RET) Anthony and
 Jenny Coppa
 Bob and Josephine Corbin
 Brianne M. Cork
 John and Patricia Cork
 Harry and Jean Corr
 Nancy Costello
 Patrick L. Costello
 Tracie J. Costello
 Willie L. Coston
 Richard and Sara Coughenour
 County of Northampton
 Maj. General (USAF, Ret.)

Robert and Patricia Courter
 Scott and Marsha Coverdale
 Charles Cox
 Michael and Linda Cox
 Richard C. Craft
 Ronald M. Craft
 Melody G. Craig
 William H. Craig
 Susan Cranford
 Edward and Shirley Crockett
 Samuel and Freda Crockett
 Carlton A. Crooks, Jr.
 Dr. Richard and Jean Crowder
 Jim and Sarah Croxton
 Dee Ann Cunningham
 Currie Funeral Home, LLC
 Keith and Kim Curtis
 Cushman & Wakefield |
 Thalhimer
 Henry and Linda Custis
 James and Ann Custis
 Marlene K. Cutler
 D. E. Kirby, Inc.
 Daiichi Sankyo, Inc.
 Juanita T. Daley
 Andrea V. Damin
 Royden and Ruth Daniels
 Clement and Carol Danish
 Ivan Danzig

ANNUAL DONORS

Theresa Daoud
 Frederick and Amy Darby
 Doug and Sharon Davel
 CMSGT.(RET) Michael and Dolores David
 Roxanne N. Davila
 C. Lee and Elaine Davis
 Mike and Carol Davis
 Dr. and Mrs. John G. Davis
 Kristy B. Davis
 J. Maston and Nancy Davis
 Dr. Robert and Cheryl Davis
 Alvin R. Day
 Patricia J. Day
 Sarah K. Dearman, RN
 Lucy E. DeFanti, DO
 COL (USAF RET) Tim and Caroline DeGarve
 Theresa Del Corso
 Sara B. Delo
 Delta Sigma Theta Sorority, Inc.
 Kimberly A. Denny
 Angela D. Denson
 Elizabeth M. Dente
 Nancy M. Dente
 Joseph and Jean Deprinzio
 Bryan A. Derr
 Robert and Barbara Derring
 Esther M. Desimini

Deborah Dettmer
 Courtney E. Detwiler
 Maria R. Dickerson
 Charles and Claiborne Dickinson
 Thomas and Patricia Diggs
 Mary Parke M. Dillard
 Dianne R. Dillon
 Bob and Iola Dilorio
 Marc DiMarzio
 Amanda DiMiero
 Howard and Sandra Dimter
 Woganee M. Dires
 Dixon Hughes Goodman, LLP
 Mr. and Mrs. Elmer T. Dize, Jr.
 Tonya M. Dize, LPN
 Lisa M. Dodd, DO
 Robert and Sherlie Doherty
 Josephine F. Dollar
 Dominion Virginia Power
 Kia P. Donaldson
 Roger and Sue Donaldson
 Dorn's Body & Paint, Inc.
 Michael and Robin Doucette
 Jerry N. Doughty
 Lisa A. Doukas
 Tammy D. Doswell
 William and Carol Downey
 David and Judith Downin
 Downings United Methodist

Church
 James and Donna Doyle
 DPR Construction
 Dr. John and Lorraine Drago
 Sharon L. Driscoll
 David and Mabel Driver
 Clyde and Lorraine Gregory
 Beth Dropski
 De'Shena R. Drummond
 W. Wayne and Ruth Du Bois
 David and Kathie Dudek
 Porsha M. Duke
 Mabel E. Duncan
 Mary Beth Dunlap
 Amelia P. Dunston
 Randy and Paula Dunston-Cottee
 Jaye C. DuPaul
 Angela Dust
 E. Polk Kellam Foundation
 Fund I – Eastern Shore of Virginia Community Foundation – affiliate of Hampton Roads Community Foundation
 Robert and Dianne Ealey
 Earley Dental Laboratory, LLC
 Daniel and Sharon Easter
 Eastern Shore Madrigal Singers
 John and Cynthia Eberwine
 Dawnita M. Eder

Kathryn Edgar
 Steven and Ellen Edmonds
 Lorraine P. Edmonson
 Emily T. Edwards
 James Edwards
 Mandy N. Elias
 Beth Ellington
 Jeannie I. Elliott
 Candace M. Ellis
 Benjamin and Frances Ellis
 Lynn H. Ellis
 Richard and Gloria Elmore
 Thomas M. Elphick
 Joseph and Holly Emerson
 Patricia E. Emerson
 Drs. Rogers and Theresa S. Emory
 Jerry and Rhonda Eng
 Jim and Terry Ennis
 Ruby D. Ensley
 Epic Systems Corporation
 Episcopal Church Women of Cople Parish
 Augustus Ervin
 Eastern Shore of Virginia Chamber of Commerce
 Estate of Richard A. Godwin
 Alfred and Mary Estrada
 Charles T. Etz
 Wendy Eugene

ANNUAL DONORS

Jerry and June Evans
 Thomas and Diana Evans
 Exmore Rotary Club
 Foundation, Inc.
 William Failor
 Mary P. Fallon
 Betty Farley
 Catharine J. Farley
 Fred and Susan Farley
 Vickie Farrar
 Gil and Brenda Fauber
 Bruce and Pamela Fawver
 David and Nancy Fazzone
 FBO David W. K. Peacock, Jr
 Ernest and Roberta Federici
 Louis W. Federico
 Shannon C. Fedors
 Paul P. Ferguson
 Ferris & Eakin, P.C.
 David Fields
 Katherine S. Fields
 Shawanda K. Fields
 J. Scott and Denise Finney
 First Uniform, Inc.
 Lynne J. Fiscella
 Elmer and Gloria Fisher
 Randolph T. Fisher
 G. Fred Floyd, Jr.
 Kristin S. Forbes
 Belinda J. Ford

Forrest Bros. Funeral Home
 Paul and Karen Forster
 Patrick and Carol Forys
 William and Margaret Fosdick
 Ernest and Martha Frank
 Jason and Jennifer Frank
 Sharon E. Frankie
 Robert and Mabel Franklin
 Frank McLawhorn Realty
 Larry and Mildred Frashure
 Drs. Charles and Lisa Frazier
 Lorna A. Frazier-Lindsey
 Joan E. Free
 D. Jay Freedman
 Ronald and Jo Ann Friend
 Raymond and Wanda Friend
 Friends of David Doughty
 John H. Frischkorn
 Tammy D. Fukuda
 Elizabeth R. Fuller
 Fulton County Chapter NYSARC
 Dr. Peter and Elizabeth Galantich
 Melanie L. Galloway
 Faye P. Gargiulo
 Larry and Kathleen Garner
 Frederick and Elizabeth
 Lee Gaskins
 Linda Gaskins-Jeffers
 F. L. and Patricia Gatewood
 Debra Gausmann

GC Commercial, Inc.
 GCS Family Properties, LLC
 Pamela C. Gebhart-Cline
 Ronald and Penny Geiger
 Genentech USA
 Angela C. Gentry
 Mr. and Mrs. Gordon L.
 Gentry, Jr.
 Beverly L. George
 Leslee D. George
 Dr. Frederick and Sheila Gessner
 Garry and Elizabeth Gibbons
 Dr. Carl and Ethlyn Gibson
 Kenneth W. Gibson
 William R. Gibson
 Joseph and Lillie Gilbert
 Dr. William and Gretchen Gillen
 Samuel and Dr. Lori Gillespie
 Melissa A. Gillespie, RN
 Eugenia S. Gillikin
 James E. Gillikin, Jr.
 Norma Jean Gilmer
 Gary S. Ginsberg
 M. Edward and Diane Gladstone
 Peter K. Glagola
 Susan C. Glazier
 Diane Glinka-Edinger
 Tracy Glock
 Gloucester Main Street
 Preservation Trust

Gloucester Ruritan Club
 Ralph and Linda Godwin
 Kemper Goffigon, III
 Sara N. Goffigon
 Muriel Goldberger
 Joseph and Carolyn Golibart
 John W. Golla
 Jesse R. Goodrich
 Royden and Martha Goodson
 Bonita A. Goodwin
 Janet M. Gorman
 Donn and Marilyn Gorman
 Cathy B. Gourley
 Grace Industries
 William and Janice Grace
 Ann Graham
 Olivia G. Graham
 Amy Grant
 Roger and Iris Grant
 Patricia S. Graves, RN
 Charles and Wendy Gray
 Thomas Greek
 Erica G. Green
 Judith L. Green
 Greenbush Automotive, Inc.
 J.T. and Jennifer Greenwell
 John Greenwood
 Greg Garrett Realty
 Keith and Crystal Gregory

ANNUAL DONORS

Susanna S. Gretskey
 Rayania M. Grice
 Ebonie D. Griffin
 Tiena M. Griffith, LPN
 Nancy Griffiths
 David and Deirdre Grimm
 Lauren Grimmer
 Barry L. Gross, MD
 Shirley C. Guenther
 Marta Guerrero
 Robert and Susan Guillotte
 Winfred and Melissa Guthrie
 Theodore S. Haddad
 Jo L. Hadley, RN
 Robert M. Haggett
 Kelsey Hagwood
 Donna Dittman Hale
 Kathy Haley
 Derrick P. Hall
 Frank and Katherine Hall
 Amanda P. Hamblin
 Sara V. Hamblin
 Clinton M. Hamilton
 CWO Harvey and
 Sherri Hamm
 Col. William and Jacqueline
 Hammond
 Hampton Roads Community
 Foundation
 Hampton Stationery

Jon Hanbury
 Amanda K. Haney
 Dr. Robert and Nancy Harding
 Thomas and Kathy Hardy
 Ronald and Claudia Harmon
 Kimberly A. Harper
 Samuel and Marie Harper
 Darlene M. Harrell-Harris
 Denyse T. Harris
 E. Brian Harris
 Erika M. Harris
 Jeffrey E. Harris
 Annette Harrison
 Edith M. Hartman
 Judith K. Hartman
 Chuck and Sally Hartman
 Scott Harwood
 Karen J. Haskett, PhD
 Alice B. Hatcher
 Barbara C. Hatton
 Kyle Hause
 Lee and Vicki Hauser
 Amanda N. Havelka
 V. Ansell Hawkins
 William and Carol Hawthorne
 Andrew Hay
 Elizabeth E. Hayes
 Judith B. Hayes
 Janice W. Haynes

F. Warren and Shirley Haynie
 Healthcare Project Management
 Partners – HPMP
 Kimberly J. Healy
 Cheryl L. Heard
 William and Patricia Heath
 Constance M. Hebert
 Edward G. Heckler
 Tammy A. Hedsbeth, FNP-C
 Martina Heilemann
 Stephanie Heinatz
 James Helbig
 Brandy B. Helman-Dieterich
 Barbara J. Hendershot
 David and Lori Hendershot
 Susan C. Henderson
 Dr. Jeffrey and Rebecca Henke
 John and Jayne Herchenroder
 E. Phillip and Sandra Hickman
 Philip and Susanna Hickman
 Joy Hicks
 Kevin and Barbara Higgins
 Valorie S. Hilbmann, RN
 Denise C. Hill
 James Hill
 Lynda L. Hill
 Rufus and Charnetta Hill
 Jeff Hilton
 Kelly M. Hilty

Frances A. Hines
 J. Allen Hines
 Nelson and Janice Hinson
 Edward R. Hipp, III
 Bill and Wanda Hitchcock
 Harriette C. Hoagland
 Jeanne P. Hockaday
 Daniel Hockenberger
 Hodges & Bryant, LLC
 Sherry Hodgkin
 E. David and Louise Hodor
 Bill and Claire Hoff
 James and Jennifer Hogan
 Michael C. Hogan
 Hogg Funeral Home, Inc.
 Frances A. Holcomb
 Kehn N. Holden
 Barton and Margaret Holland
 Thaddeus and Renee Holloman
 David and Jean Holman
 Holmes Presbyterian Church
 Anthony and Barbara Holtry
 Kathleen M. Hom
 Hoover Color Corporation
 Genis C. Hornsby
 Lisa M. Hosang
 Hospice Support Services, Inc.
 Steven J. Hospodar, MD
 Robyn L. House

ANNUAL DONORS

Jason and Keri Houser
 Dr. H. Renfro and Becky Howard
 James Howard
 Shavaun Howard
 HSC Acquisition, LLC
 Sara J. Hubbard
 Brooke H. Hudgins
 Terry L. Hudgins
 Barbara H. Huff
 Gregory and Cynthia Hughes
 Geoffrey and Karen Hummel
 Calvin D. Humphrey, Jr.
 Kathy Hunter
 Timothy and Gretchen Hunter
 Anne A. Huntington
 Norton and Alvine Hurd
 Lynne Hurst
 Dean and Rebecca Huston
 Evelyn P. Hutchens
 Harvey R. Hutcheson
 D. Michael and Cecelia Hymes
 Ian Michael Burgett Charitable
 Foundation
 IBM
 John Igoe
 Roger Ticconi and
 Mary M. Inman
 Beana V. Insley
 D'Andrea M. Insley
 Insys Pharma, Inc/Insys

Therapeutics, Inc.
 Loretta G. Irby, RN
 Teresa M. Iverson
 David and Sandra Ives
 J. Rawls Saecker, DDS, PC
 Edwin and Katherine Jackson
 Grayson Jackson
 Kimon D. Jackson
 Rick R. Jackson and Dr. Donna
 Haygood-Jackson
 Tamara Jackson
 Whitney Jackson
 Michael and Claire Jacobs
 Hunter and Mary Jacobs
 Alfred and Angela James
 Cindy L. James
 Leland and Marion James
 Dr. Jimmy and Nancy James
 Yvonne R. James
 Jason Lee, PTA
 Elsie I. Jefferies
 Nicholas R. Jefferson
 Tammy R. Jefferson
 Hunter M. Jenkins
 Karen Y. Jenkins
 Katherine A. Jenkins
 Kevin and Mary Jenkins
 John M. Jennings
 Michelle D. Jennings
 Charlene S. Jensen

Emil and Christine Jensen
 Daniel and Susan Jensen
 James H. Jester
 Jim Young Builders, Inc
 A. Easley Johnson, Jr.
 Anne Johnson
 Charlotte R. Johnson
 Daniel E. Johnson
 Kimberly Johnson
 Shaunda R. Johnson
 Shelly M. Johnson
 Tyler Johnson
 Earl and Margaret Ann Johnston
 Richard Johnston
 Thomas J. Hunter and
 Vicki L. Johnston
 Karen Jones
 Lisa S. Jones
 Patrick and Holly Jones
 Paula S. Jones
 Jan Joransen
 Eugene and Anne Jordan
 Judy L. Jordan
 Cassell Jordan Jones, MD
 Chris and Mary Jorgensen
 Junior Woman's Club of
 Northampton County
 Jupiter Entertainment, LLC
 Sharon F. Kanipe
 Drs. George J. Kannarkat and

Melisha Bissram
 Fred C. Kappus
 Karen Crockett, Inc.
 Carrie S. Karnes
 Kaufman & Canoles, P.C.
 Gary S. Kavit, MD
 Mary K. Kaylor
 William S. Keeler
 Michael and Gina Keesee
 Dr. Vincent and Marianna Keesee
 Caramine Kellam
 Joan E. Kellam
 Lloyd J. Kellam III, MD
 Margaret B. Kellam,
 Richard E. Kellam
 Dennis and Harolette Kelley
 Janet L. Kelley
 Tracey S. Kellum
 Dr. David and Elizabeth Kemp
 Guy and Brenda Kemp
 Michael and Carol Kennedy
 Sam and Rosemary Kennedy
 Stephanie D. Kennedy
 Terris E. Kennedy, PhD, RN
 Bernadette M. Kenney
 Charles and Linda Kenney
 Ann-Christine Kent
 Lillian R. Kerner, RN
 Stephen and Lynn Kingsland

ANNUAL DONORS

Arthur and Eleanor Kinney
 Thomas and Deanna Kiple
 Kjersten E. Kipp
 Johnny and JoAnn Kirkpatrick
 Justin L. Crain and
 Megan Kleckner
 Knight Funeral Home, Inc.
 Katherine Koehl
 Howard and Kathleen Kruse
 Christopher Krusie
 Alyssa M. Kurten
 Michael F. Kuzma
 Kyowa Kirin, Inc.
 Kathryn N. LaBar
 Barbara LaBonte
 Kevin and Carol Lafountain
 Jennifer L. Lakowsky
 Raywatee Lal
 April M. LaMagna
 Kimberly L. Lamm
 Frederick Lane
 Lane Farms, Inc.
 Catherine E. Langner
 Michael E. Langston
 Waverly and Peggy Langston
 Austin Langwell
 Gaynelle P. Laposata
 Melvin and Rita Laska
 Leach Wallace Associates, Inc.

Susan R. Ledbetter
 Lawrence C. Lees
 Delbert E. Lefmann
 William A. Leitner
 Christopher and Melissa Leonard
 Dr. James and Trina Lesnick
 Lesnick Family Charitable Fund
 Lettie Pate Whitehead
 Foundation, Inc.
 Stuart W. Levasseur
 Ann H. Lewis
 Jaleesa M. Lewis
 Nancy Lewis
 Patricia J. Lewis
 Vernon and Pauline Lewis
 The Honorable W. Revell and
 Lisa Lewis
 William and Faye Lewis
 Giovanni and Cindy LiDestri
 Siow Kate K. Lim
 Barbara Limmen
 Barbara J. Lindley
 Claude and Jean Linton
 Linda A. Linzey
 Lions Club of Middlesex
 County, Inc.
 Nancy W. Littlefield, DNP, RN,
 FACHE
 Living Stones Ministry

Esther G. Loch
 Monica Lochotzki
 Marianne G. Loeffler
 Dennis J. Loftus
 Dr. Joseph and Betty Lombard
 Lombard, Vogt & Foster, D.D.S.
 Dr. James and Jennifer Long
 Jere M. Long
 George and Sandra Longest
 Regina Lopez
 Michael and Teri Loring
 Roger and Lana Loring
 Diana L. LoVecchio
 Megan M. Luciano
 Helen N. Ludwig
 Kathryn D. Lukhart
 Luxterra Electrical, Inc.
 Kristin L. Lynch
 Gordon and Marie MacDonald
 Richard and Grace MacDonald
 Amathyst B. Macey
 Richard and Danette Machen
 Barbara E. MacKenzie
 Michele E. Macklin
 Derek Madan
 Dr. John and Paula Maddox
 Jessie M. Madison
 Dr. John and Melissa
 Maggioncalda

Domenic and Carol Maglieri
 Thomas and Carol Mahan
 William R. Maines and
 David J. Maines
 Keith D. Major
 Leonora M. Major & Family
 Diane A. Manchester
 Elisa M. Mangosing-Lemmon
 Amy E. Manning
 Krista D. Manning
 Laura S. Mapp
 Thomas and Carol Mapp
 Pamela Maradik
 Aida G. Marbella
 Robert and Joan Marble
 Richard Marek
 Mr. and Mrs. David D. Marks, Sr.
 Marks-Bristow Funeral
 Home, Inc.
 Thomas R. Marr, Sr.
 Elizabeth R. Marshall
 Jan S. Marshall
 Tracy N. Marshall
 Drs. H. Blair and
 Luisa Marsteller
 Barbara A. Marszalek
 Elizabeth J. Martin
 Gaynelle C. Martin
 Patricia B. Martin
 William S. Massey

ANNUAL DONORS

Masters Mechanical Corporation
 Thomas and Margaret Mateer
 Karen E. Mathews
 Melanie Matthews
 Lisa G. Mayo
 Lisa J. McAdoo
 Timothy P. McCann
 Aubrey and Nancy McCants
 Stephen and Julie McCary
 James W. McCorry, DO
 Robert and Susan McCreary
 Dr. James and Emily McDaniel
 Lisa E. McDonald
 Brenda L. McGinty
 Caitlin V. McGowan
 Ronald and Susan McGraw
 Jane D. McKinney, PhD
 Sheila M. McKinney
 Jennifer H. McLane
 Robert M. McNeel
 Paula R. McPeak
 Thomas and Suzanne Meade
 The Keith Meadows Family
 Leroy and Concetta Meads
 MEDNAX Services, Inc.
 Charles and Frances Meissner
 Doris A. Melancon
 Peter and Kerry Mellette
 Merck
 Merck Foundation

Julian and Sherry Meredith
 Tricia Merson
 Jonathan R. Metcalf, RN
 Edie Meyers
 Midwest Firestop, Inc.
 Anthony Milazzo
 David and Catherine Miller
 Cecil Miller
 Elisha E. Miller
 James and Sallie Miller
 Lou Ann Miller
 Mae Lee B. Miller
 Nicole E. Miller
 Susan W. Miller
 John Mincks
 Gary and Pam Minter
 Angela Mitchell
 Ivy L. Mitchell
 Shalanda L. Mitchell
 Mitchell Custom Homes, Inc
 James H. Mixon
 LaTia N. Molette
 Roslyn L. Monroe
 Kevin and Cindy Montrieff
 Wade and Catharine Moore
 Frank V. Moore
 Kayleigh S. Moore
 Roger and Edith Moore
 Robin L. Morehart
 Sharon Morey

Archer and Susan Morgan
 John and Kate Morgan
 Suzanne E. Morgan
 Vickie O. Morgan
 Christine M. Morillo
 Jennifer K. Morris
 William D. Morris
 Charles J. Morton, Jr.
 Gary and Paula Mosman
 Peter S. Apostoles and
 Dr. C. Renee Moss
 Emmanuel and Michi Mouhteros
 Peggy B. Mullen
 James M. Mullins, III, MD
 Thomas and Judy Mullins
 John and Margaret Muloin
 Curtis Mummau
 Barbara E. Murphree
 Sharon E. Murphy
 William M. Murphy
 Kirkland J. Murray
 I. Corbin and Betty Muse
 Elaine G. Myers
 Patricia G. Nagorski
 Jennifer L. Najar
 Naomi Makemie
 Presbyterian Women
 Navigant Consulting, Inc.
 Mary Louise Naylor-Zodda
 John Neblett

Chad and Jackie Neely
 Amir Nekoumand
 Robin M. Nelhuebel
 Howard Nelson
 Linwood and Andrea Nelson
 Valerie Nelson
 Ruth J. Netherton
 Junius J. Neville
 Dr. William and Kimberly
 Newcomb
 Michael E. Newhouse
 David K. Newman
 Jessica N. Newman
 N. Kendall Newsom
 Joseph L. Newton
 New York State Insurance Fund
 Vicky Nicholau
 Dianne L. Nichols
 Dr. Maynard and E. Nichols
 Sharron L. Nichols
 Anne B. Nock
 Northern Neck Electric
 Cooperative
 Northern Neck
 Accounting, PLLC
 Northern Neck VFW
 Auxiliary 7167
 Douglas and Linda Ann
 Northstein
 Rory and Patricia Norton

ANNUAL DONORS

James R. Norwood
 Mary S. Obee
 Jody Ocker
 Pamela M. Oden
 Michael and Katie Odenweller
 Dr. Nicholas and Martha Ogburn
 John D. Ogram, MD
 Old Point National Bank
 Old Point Trust & Financial
 Services, NA
 Colon and Evelyn Oliver
 Katherine G. Oliver
 Jodi A. Olson
 Regina L. Onesty
 Onley United Methodist
 Women Night Circle
 Margarita Orzolek
 Osen Hunter Foundation
 Tahanie Osman
 Melinda W. Outlaw
 David E. Outten and
 Reverend Tammy Estep
 Beverly R. Owsley
 Oyster Point Construction
 Mindy Pacheco
 Dickie Page
 Mark Palmer
 Ellen S. Papetti
 William and Betty Parker

Bruce N. Parker
 Donald W. Parker
 Jacqueline D. Parker
 Kristi G. Parker, LPN
 Subrina L. Parker
 Melanie L. Parkhurst
 Trudy L. Parks
 Sharon Parr
 Robert B. Parry
 Taylor R. Patistas
 Fiona M. Patoux
 Dorothy H. Patterson
 Jean C. Patterson
 Frances M. Patton
 Shannon G. Paul, LPN
 Samantha G. Pavlik
 Harvey and Mary Payne
 Megan L. Payne
 Christopher R. Peaden
 Karla J. Peard
 Glen H. Pearson
 Dr. William and Rosalie Peirson
 Estella Pena, RN
 Peninsula Community
 Foundation
 Peninsula Pathology Associates
 Susan L. Pennington
 Keith and Teresa Percic
 Diane L. Perina

Di-Jon Perkins
 Gert and Elizabeth Persson
 John P. Peterman
 Michelle L. Peterson
 Pasquale Petrera, MD
 Pfizer, Inc.
 Sun K. Philibin
 Charles and Judy Phillips
 Edward L. Phillips
 George P. Phillips
 George and Josephine Phillips
 Howard J. Phillips
 Jerry and Donna Phillips
 Laura H. Phillips
 L.F. and Linda Phillips
 Wanda S. Phillips
 Phillips Energy, Inc.
 Candace H. Picagli
 Austin and Danielle Pittman
 William M. Pitts
 Kenneth and Patricia Pleasant
 Felice Plotkin
 PMA Architecture
 PNC Bank Foundation
 David J. Pone
 Leo and Frances Ponton
 Meredith and Joe Poole, III
 Poquoson City Public Schools –
 Instructional Support

David and Judy Portner
 Carter Powell
 Georgia Powell
 Jeremy B. Powell
 Robert and Susan Powell
 Premier, Inc.
 Jean and Vonda Preston
 Tracey L. Preston
 Catherine W. Price
 Regan Prince
 Edwin and Margaret Prior
 Norma J. Pritchard
 Jerry and Elizabeth Pruitt
 Harold Prussia
 Purcell's Seafood, Inc.
 Herman M. Quattlebaum
 Deena L. Quinn
 Kathy Rabalais
 Cheryl Rabbani
 Katherine Rabe
 John and Toni Radford
 Andra S. Raitch
 Denise D. Randall
 Polly M. Ransone
 Rappahannock Concrete
 Corporation
 Rappahannock Raiders
 Booster Club
 Peter and Karen Rapuzzi

ANNUAL DONORS

Eric Rasmussen
Mark Rath
Julie K. Rautio
Edward and Roberta Ray
Anne L. Reath
Melanie T. Reavis
Thomas and Ursula Recktenwald
Allan and Linda Reese
Daniel J. Reichenbach, MD
David and Nancy Reichenbach
John and Mary Reisbick
Mary A. Rescott
Col. (RET) Allan and Lillian

Resnick
Luther W. Revere, Jr.
Amy G. Reynolds
Elizabeth C. Rhodes
Martha Rhodes
Karen J. Richardson
Robert C. Richardson
Thomas M. Richardson
Cheryl T. Riley
Riverside Behavioral Health
Center
Riverside Cancer Care Services
Riverside Center for Internal

and Family Medicine
Riverside Child Development
and Learning Center
Riverside College of Health
Careers – RN Day Div.
Class 2016
Riverside Diabetes Services
Riverside Health System
Information Systems
Riverside iCare/EPIC
Capital Project
Riverside Neurosciences
Riverside PACE – Newport News
Riverside Radiation Oncology

Team – Williamsburg
Riverside Regional Medical
Center Volunteers
Riverside Rehabilitation Institute
Riverside Roof Truss, LLC
Riverside Tappahannock
Hospice Staff
Riverside Tappahannock Hospital
Riverside Walter Reed Hospital
Riverside Walter Reed Hospital –
Facilities Maintenance Team
Riverside Walter Reed Hospital
Revenue Cycle Department
Riverside Walter Reed Hospital
Volunteers
RLPS Architects
C. Steven and Carolyn Roaf
Wallace Roark
Joyce A. Robbins
Nancy S. Robbins
Barnaby and Betsy Roberts
Ian and Beverley Roberts
Beverly A. Roberts
Bill and Vicky Robinette
Cynthia Robins
Jerry and Nancy Robinson
Mr. and Mrs. Haydon
Rochester, Jr.
Jennifer Rogers
John and Kathleen Rogers



The Riverside Regional Medical Center's newly renovated Labor and Delivery Unit opened in 2016.

ANNUAL DONORS

Col. (RET) Roy D. Rogers
 Dietrich and Erika Romey
 Susan Rosenthal
 William L. Ross
 Sherri Rosselli
 Louis and Emily Rossiter
 RPMC Administration Team
 RPMC Facilities Engineering
 Team
 RPMC Santa's Workshop
 Robert and Leah Rubenstein
 Thomas L. Ruch
 Sally A. Ryan
 Sharon J. Ryan
 Elizabeth Ryan-Drewyer
 Calvin F. Ryder
 S & T Commercial Cabinets, LLC
 Erin E. Sadler
 Thomas M. Sadtler
 Susan L. Sale
 Robert and Lisa Salsberry
 Glenn and Caz Salvador
 Lisa M. Sandefur
 J. F. (Frank) Sanderson, Jr., MD
 Cynthia D. Sapp
 Ronald L. Saunders
 Thomas and Virginia Savage
 Sharon H. Schaffer
 Paul F. Schellhammer

Amy L. Schendel
 Dr. David and Patricia Schengber
 David Scherer
 Kimberly R. Schiavone, LPN
 Richard and Catherine Schiffer
 Wilton and Cynthia Schmidt
 Mary Schrum
 Joseph and Jennifer Schulz
 Drs. Michael and Cherry
 Schwartz
 Megan Schweickardt
 Arthur and Wilma Schwendeman
 Marybeth W. Scott
 Matthew P. Seaford
 Charles and Michelle Seal
 Suzanne C. Seebald
 Brittany A. Seiler
 Timothy Seitz
 Teena M. Senicka
 Jeff T. Sensenig, DO
 Joseph C. Serino
 Michele G. Setliff
 Russ and Susan Settle
 Sandra H. Shackelford
 Stephanie L. Shackelford
 M. Rust and Nancy Sharp
 Len and Faith Shartzer
 Dr. Mark and Debra Shawnik
 Patricia D. Sheehan

Donald W. Sheene
 Conway and Kay Sheild
 Brig. General (Ret) Daniel and
 Jacqueline Sherlock
 Carol W. Sherman
 Richard and Barbara Sherrill
 Shiloh Baptist Church
 Jennifer S. Shinn
 Dr. Gregg and Lisa Shivers
 Shore Memorial Hospital
 Auxiliary, Inc.
 Shore Transport Services, Inc.
 Belinda B. Short
 Jeri L. Sibley
 Siemens Industry, Inc.
 Douglas and Linda Sier
 David J. Silberman
 William C. Silberman
 Simmons Lawn & Landscaping
 Alfred L. Simons
 Theresa G. Sinclair
 Larry Slaughter
 Andrea N. Smith
 Thomas and Ann Smith
 Charlene E. Smith
 Conway and Lyn Smith
 David M. Smith, MD
 Ericka N. Smith
 Fallon M. Smith
 Karen S. Smith

Melissa H. Smith, LPN
 Monica R. Smith
 Phyllis A. Smith
 Shirley A. Smith
 Teri Smith
 John E. Smithwick
 Sandra M. Snapp
 Ann H. Snead
 Dr. John and Ann Snyder
 Toni Sollars
 Soroptimist Club of
 Accomack County
 Spain Commercial, Inc.
 Kelly M. Spencer
 Henry and Linda Spire
 Brenda M. Spivey
 Spotswood Law Offices
 Thelma L. Spotten
 Nelson and Patricia St. Clair
 St. Thomas United Methodist
 Church Missions
 Scott and Beth Stabler
 Dr. Richard and
 Marylouise Stader
 Melanie L. Stanius
 John and Debbie Stanley
 Randall and Deborah Stanley
 Gary Starkey
 Joseph and Janice Starlings

ANNUAL DONORS

State Farm
Wendi Steinberg
Gary J. Stephens
Bonnie Stevens
Robert and Susan Stevens
Kevin Stewart
Mary Martha Stewart
Terry K. Stewart
Duane and Julie Stickney
Sally W. Stiles
N. Philip and Susan Stinchcomb
James and Deloris Stokes
Robert L. Stokes, Sr.
Dr. Christopher and Lisa Stolle
Dr. Eric and Sharon Stone
Eric and Lisa Stone
H. Paul Stough, III
Strategic Sales, Inc.
Amy J. Stricker
Gordon and Faye Sturgis
Lori L. Sturgis
Roger and Sheila Styke
Subaru of America, Inc.
Ronald E. Sullivan
Deborah L. Sullivan-Yates
Lotte I. Summey
Barry Sutherland
Vanessa M. Swan

SWBG Operations Group
Teresa C. Sweaney
James and Patricia Sweeney
Sysco Eastern Maryland, Inc.
Wendy Szakelyhidi
Tabb High School
Damian J. Tagliente, MD
Takeda Pharmaceuticals,
U.S.A., Inc. & Affiliates
Rebecca C. Talbert
Wayne and Brenda Talley
Linda G. Tallmadge
Walter and Debora Tanner
Susan B. Tanner
Richard and Margaret Tate
Denise E. Taylor
Joy B. Taylor
Stacie M. Taylor
Teresa R. Taylor
Wendy L. Taylor
Taylored Printing
Rita D. Temple
Rebecca Tench
Don and Barbara Tenpas
Reginald and Joyce Terry
Teva Pharmaceuticals
Henry and Judith Thayer
The ALS Association –
DC/MD/VA Chapter
The CATO Corporation

The Douglas Y. Hicks Trust
The Estate of Luis H. Pena
The Kroger Company Customer
Communications Department
The Maids-Columbus
The Miller Oil Foundation
Norman and Nancy Thibodeaux
Kathy L. Thomas
Mildred R. Thomas
Yolanda Thomas
Thomas L. and Dianne S. Ruch
Christine K. Thompson, RN
Lisa S. Thompson
Joan Thompson
Craig and Sharon Thompson
Vicki C. Thompson
Brandie N. Thornton
Joanna E. Thornton
Thornton Funeral Home, Inc.
Patricia Thrift
Sadie J. Thurman
Daniel and Donna Tignor
John and Jean Tilly
Timothy A. Leigh, DDS., PC
Tiffany A. Titus
Starr I. Todd
Sophie G. Toliver
Ross and Amy Tomlin
Robert Toner

Paul and Marjorie Tongue
Edward Tonnessen
James and Ruth Torbert
Totally Clips, Inc.
Town of Cheriton
Towne Bank
Dan Townsend
Billy Trader
Philip and Regina Trainer
Molly E. Trant
Newell and Esther Trask
Charles T. Treadway
Elva F. Trice
Thomas R. Tucker, III
Mirjam K. Tuovila
Catherine Turlington, MD
Barbara Turner
Deborah J. Turner
Mona L. Turner
Turner Construction Company
Jessica Tyree
Mitchell and Katherine Tyree
Betty M. Tyrrell
Ukrop's Dress Express
Patricia Underwood
Union First Market Bank
United Seating & Mobility, LLC,
dba Numotion
United Way of Virginia's

ANNUAL DONORS

Eastern Shore
 The U.S. Charitable Gift Trust
 Joseph and Sara Valentine
 Harold and Judith Van Arsdale
 Vansant and Gusler, Inc.
 Dr. Charles and Ann Vaughan
 LCDR USCG (Ret) Harry
 and Judith Vaughan
 Jessica Veeder, DO
 John and Harriet Verburg
 Joanne M. Verhulst
 Frances V. Verniel
 Ted and Connie Vest
 Col. Guadalupe Villarreal
 Virginia Employment Commis-
 sion (VEC) IT Department
 Virgina Master Naturalist
 Eastern Shore Chapter
 Virginia Water Environment
 Association – VWEA
 David Vocke
 Richard and Rella Voelker
 Nhuan Q. Vuong
 W.M. Jordan Company
 Berry and Lillian Waddy
 Sharon S. Waddy
 David and Lisa Wagner
 Herman H. Wake
 William and Barbara Walker

Patricia Waller
 William and Jacqueline Ward
 Mary J. Ward
 Joseph and Helen Ware
 Elizabeth G. Waring
 G. Lawrence and Julianna
 Warren
 David C. Vansickle and
 Anne T. Warren-Vansickle
 Warwick Forest Residents
 Association
 Washington Funeral Home, Inc.
 Sandra C. Wason
 Dr. James and Mildred Wassum
 Howard and Claudia Waters
 Martha L. Waters
 William and Beverly Watson
 Rebecca C. Way
 Thomas and Nancy Weakley
 Gary Weatherspoon
 Theresa J. Weimer, RN
 Andrea K. Weiser
 Kim N. Weitzenhofer
 John and Martha Welch
 Welch Funeral Home, Inc.
 Hill and Alice Wellford
 Robert and Nancy Wellman
 Nathaniel G. Wesley Jr.
 William and Priscilla West

Mary L. West
 Robin A. West
 Sarah E. West, MD
 Donald R. Weymann, MD
 Maj. (R) Malcolm and
 Althea Wharton
 Patricia Whipple
 Greg and Carolyn White
 J.W. White
 Travis and Margaret White
 Vicki G. White
 Rachel F. Whiteford
 Jaclyn M. Whitley
 Margaret G. Widgen
 Nicole N. Wiggins
 Edward L. Wigley, Jr.
 Mark and Margaret Wiley
 Dr. Richard and Carolyn Wilfong
 Tonya S. Willett
 Cynthia P. Williams
 John and Ann Williams
 Lanell R. Williams
 Linda B. Williams
 Lynda R. Williams
 Lamar and Marie Williams
 Melissa J. Williams
 Michele B. Williams
 Tom and Elisabeth Williams
 Wayne and Deborah Williams
 Arba and Cynthia Williamson

Cynthia F. Willis
 Gordon and Patricia Willoughby
 Henry and Christine Wilson
 Kristi M. Wilson
 Truman N. Wise
 Kim P. Witman
 Alan and Deborah Witt
 Joanne M. Wolf
 Catherine Wolford
 Woman's Club of Accomack
 County
 Lt. Gen. (Ret) C. Norman and
 Elizabeth Wood
 Minta D. Wood
 Michelle S. Wooten
 Marianne Wortham
 Claudia M. Wright
 Dana C. Wright
 Yatra, Inc.
 Jean F. Yeoman
 Phill Yi
 Kuen Chang Yoon
 Lisa F. York
 York River Crossing Associates/
 Tower Park Real Estate
 York River Flooring, LLC
 Capt. Philip F. Yosway, USN, Ret.
 Jean T. Young
 Barbara B. Zeiller
 Tracye A. Ziglar

“Jonathan is a compassionate and caring nurse. He was there for me and my family day and night. Thank you so much for your loving care. We love you. I would give you five stars, your heart has no bounds. Thank you!”

GRATITUDE GIFTS

Thank you for your gifts of gratitude recognizing these extraordinary individuals.

Diana Abrams
O.T. Adcock, MD
Mary Allen
David H. Alpert, MD
Javier Amadeo, MD
Ellyn R. Amato, MD
Biral Amin, MD
Vasudev G. Ananthram, MD
Romney C. Andersen, MD
AnR Career Solutions
Tamara N. Artis-Simmons, RN
Shafqat H. Ashai, MD
Bryan N. Baines, MD
Chaplain Vernita L. Baldwin
Amy E. Balka, MD
Rebecca H. Beasley
Tammy Beavers, MD
Kamel Ben-Othmane, MD
Luciana D. Bester, MD
Brian J. Billings, MD
Shantel T. Blume
Robert E. Briggs, MD
Janet E. Buckner, RN
Diane Bundy
Natalie R. Bunting, RN
Scott V. Burgess, MD

Patrice J. Burns
Albert A. Burton, MD
Margaret K. Camp, RN
Sridhar R. Chitti, MD
Edward Chu, MD
Mark G. Clarke, MD
Anastasia Cleary, MD
Kristol Clemens, RN
William Coates
Angela R. Cochran, MD
Donna Crandol
Jennifer Crawfoot, RN
Marshall A. Cross, MD
Wirt W. Cross, MD
Brian K. Cubbage, MD
Angela T. Custis, RN
David F. Dalessio, DO
Carie L. Deweerd
Lisa M. Dodd, DO
Jessica E. Doggett, NP
Kia P. Donaldson
Carolyn T. Dough
Katharine M. Dove, RN
Todd E. Duggan, MD
Denise Y. Duhon, MD
Richard K. Dunn, MD

Sharon M. Easter
Richard R. Edwards, MD
Mark Ellis, MD
Mary L. Evans, LPN
Paul L. Evans, III, MD
Natasha D. Everett
Timothy Farrell, MD
Charlie M. Faulk, MD
Joe J. Fenn, MD
Vonda L. Firth
Annie Fletcher
Cam C. Fox, RN
Kady D. Frye, RN
Elena C. Garrett, MD
Renato G. Gata, MD
Frederick M. Gessner, MD
William S. Gillen, MD
Lori K. Gillespie, MD
C. Delp Givens, MD
Kimberly R. Gooding, RN
Maria A. Greene, RN
Jacqui Grizzard
April L. Guminsky, MD
Patrick Haggerty, MD
Debra B. Hall, RN
J. Matthew Halverson, DO

GRATITUDE GIFTS

Sherinna Hammond
Hampton Roads Neurosurgical
& Spine Specialist
Patrick N. Harding, MD
William O. Harris, MD
Debora M. Hart, LPN
Jacinta Hasan-Mitchell
Jeffrey M. Haskins, MD
Courtney A. Hastings, NP
Claude A. Hawkins, MD
Tammy A. Hedspeth, FNPC
Thomas Hollandsworth, MD
Michael S. Hooker, MD
Frank H. Huffman, MD
Elizabeth R. Humphrey, RN
Benjamin S. Ingerson, PA-C
William P. Irvin, MD
Alishia R. James
Ray L. James, MD
Jimmie Jamison
Todd A. Jenkins, MD
Alicia A. Jims
Jacob E. Jones, MD
Helene Jubie, RM
George J. Kannarkat, MD
Gary S. Kavit, MD
Lloyd J. Kellam, MD
Carrie Kennedy
Laura D. Kerbin, MD
John F. Kessler, MD

Jonathan N. Khoury, MD
Christi L. Kilgore, RN
Christopher M. Killmon
Lori Killmon, RN
Faith C. Kim, RN
Caitlin N. Kleinhans, RN
Dean B. Kostov, MD
Flavia E. Kostov, MD
Harry L. Kraus, MD
Jacob M. Lantry, MD
Joseph D. Layser, MD
Carrie B. Lee, RN
Wolfgang Leesch, MD
Debbie Legg, RN
Eugene M. Link, MD
Anthony P. Lombardo, MD
Rita R. Lugo, RN
Deborah A. Maddock
Billy J. Marshall, RN
H. Blair Marsteller, MD
Samantha A. Martin, RN
Reginald K. Mason, MD
John Q. Mattern, DO
David B. Maxwell, MD, FACP
Laura E. McAleer-Leavey, MD
William H. McAllister, MD
Teresa L. McConaughy, MD
Kathy McCordle
Beverly McDaniel



Advanced Simulation Manikin, "Andy Dubbs", named after Jack and Carol Dubbs who made a gift through the Anne Cutler Estate in gratitude of the care Jack received at Doctors' Hospital.

Kathy B. McDowell
Megan B. McGavern, DO
Kimberly A. Meyer, LPN
Paul J. Micale, MD
John F. Miller, MD
Caitlin D. Monroe, RN
Jasmine A. Montgomery
Susan E. Moore, RN
Jessica Morrisette, RN
Daniel M. Muench, MD
Daniel D. Munn, MD
Allan L. Murphy, MD
Hoskote S. Nagraj, MD
Ashutosh S. Naniwadekar
Das B. Narayan, MD
Chaplain Desroy S. Nevins
Sean A. Nix, DO

Frank L. Nuar, MD
Ann B. Obenshain
Sara Outten, RN
Theresa R. Owens, RN
Robert M. Paschall, DO
Bhranti R. Patel
Kiran B. Patel, MD
Maria Pavlidis, NP
Martin A. Payne, MD
Lynda L. Pease
Peninsula Cancer Institute -
Williamsburg Team
Di-Jon Perkins
Charles K. Phillips, MD
Betty A. Pierce, LPN
Celia N. Pincus, RN
Tracey L. Preston

GRATITUDE GIFTS

Jerome A. Provenzano, MD
 Hannah M. Ptacek, RN
 Greg Purdy, PT
 Robert J. Pusateri, MD
 Sterling N. Ransone, MD
 Kimberly A. Ratcliffe, MD
 Allison N. Ray, RN
 Matthew D. Reed, MD
 Richard G. Rento, MD
 Chaplain Joseph Riss
 Riverside Cancer Care Center –
 Gloucester
 Riverside Commonwealth
 Family Practice
 Riverside Health System –
 Pharmacists
 Riverside Medical Group –
 Physicians
 Riverside Newport News
 Hospice Staff
 Riverside Oncology Nursing
 Riverside PCI / RCIC Teams
 Riverside Radiation Oncology
 Specialists – Gloucester
 Riverside Regional Medical Center
 – Emergency Department
 Riverside Regional Medical Center
 – Oncology ICU Nurses
 Riverside Regional Medical Center
 – 3 West Surgical Team

Riverside Regional Medical Center
 – Observation Team
 Riverside Regional Medical Center
 – ED Nurses
 Riverside Regional Medical Center
 – ICU Nurses
 Riverside Regional Medical Center
 – 2P North
 Riverside Regional Medical Center
 – 5th Floor Nursing Team
 Riverside Rehabilitation Institute
 – Nursing Staff
 Riverside Rehabilitation Institute
 Riverside Shore Memorial
 Hospital Emergency
 Department
 Riverside Shore Memorial
 Hospital Cardio Rehab
 Department
 Riverside Shore Memorial
 Hospital – ICU Nurses
 Riverside Tappahannock Hospital
 Riverside Tappahannock Infusion
 Center Team
 Riverside Tappahannock
 Pharmacy
 Riverside Walter Reed Hospice
 Staff
 Thomas N. Robeson, MD
 Angela M. Romero, RN
 Ashlee L. Rouse, RN

RRMC CVT East/West Teams
 RRMC Radiation Oncology Team
 RTH Emergency Department Staff
 Ann L. Rubio
 Jackson B. Salvant, MD
 Roger E. Schultz, MD
 Steven S. Scott, MD
 Itrish J. Scott-Brown, MD
 Thomas J. Shacochis, MD
 Rebecca D. Sheehan, PA
 Parthiv J. Sheth, MD
 Taffi N. Simone
 Genevieve Slaughter, NP
 Amanda Smeltzer
 Sharon O. Smith
 Shawke A. Soueidan, MD
 Mark E. Souther, MD
 Glenn J. Spiegler, MD
 Meredith H. St. John, RN
 Ashley J. Stump
 Lori L. Sturgis
 Gary A. Tanner, MD
 Sheila Tapp, MD
 The Jacobs Group
 Geoffrey H. Thomas
 Melody L. Thomas,
 Melody S. Thomas, RN
 Huy A. Tran, DO
 Hernani A. Valerio, MD

Francisco X. Valls, MD
 Danielle T. Vicente, RN
 Amanda Walker, RN
 Carrie Washington, RN
 Jennifer S. Washington, RN
 Christian Wathen, MD
 Roger A. Watkins, MD
 Warren P. Weixler, MD
 Wenda W. White, RN
 Deborah Whittington, RN
 Joseph F. Wilson, MD
 William Wilson
 Krystal A. Wright, RN
 Joshu K. Wu
 Stanley D. Yeatts, MD
 Garrett L. York, RN
 Mashour Yousef, MD
 Peter J. Zullo, MD

HONORARY GIFTS

Thank you for your generous gifts
honoring these exceptional people.

David H. Albert
Dwayne Allen
Biral Amin, MD
Julia Andrews
Fredrick S. Arnold, MD
Tamara N. Artis-Simmons, RN
Monique Askew
Rhonda T. Bailey
Steven W. Barley
Sherease Beal, RN
Beverly Beam
Sandra M. Beane
Lisa Blaha-Walsh
Wanika L. Blair
Christopher J. Blotter
Kristine B. Bohn
Bruce Boisits
Lynda J. Brann
Brigitta L. Braxton
Alex R. Brings
Andrea K. Brooks
Pattie N. Brooks
Emily S. Brown, RN
Robert E. Bryant
Paula O. Burcher
Denise G. Butler

Freddie Byrd
Chelsea K. Call, RN
Margaret K. Camp, RN
Lin Carey
Carol Carter
Gene Carter
Sharon L. Carter
Mark Chisam, MD
Savannah L. Church
Angela E. Claud
Kelly M. Comer
Debra C. Conner
Joseph Converse, MD
Eleanor Corbett
Patricia D. Cork
Alice Cote
Steve Covington
Amanda J. Craft
Marshall A. Cross, MD
Darlene Cumberland
Stacey T. Curtis
Billye D. Custis
Marlene K. Cutler
Virginia Dameron
Robert T. Davis, MD
Sarah DeVorss

Tonya M. Dize, LPN
Shannon Dorsey
Cynthia S. Downing
Amy T. Duncan
Morgan E. Dunlap
Paula D. Dunston-Cottee
Mary Elphick
Thomas F. Elphick
Lauren E. Eng
Erin E. Fairbanks
Charles Faurot
Maureen Figueiredo
Cathy Fisher
Laci N. Fleischmann
Eusheka L. Flood
Helen L. Fowler
Jennifer R. Frank
John Freshcorn
Teresa L. Fultz
Faye P. Gargiulo
Beverly L. George
Lori K. Gillespie, MD
Gretchen A. Golub
Amy Grant, RN
Crystal M. Gregory
Ilonda P. Gregory

HONORARY GIFTS

Kathleen O. Grella
 Michael E. Griffin
 Tiena M. Griffith, LPN
 Natalie S. Groeger
 Susan T. Gwaltney
 Michael Hamilton
 CW4 (Ret) Robert A. Hanson
 LaVerne D. Harmon, ANP, BC
 Wayne Harris
 William O. Harris, MD
 Sally E. Hartman
 Shawna M. Hatter
 Brian J. Haygood
 Doug W. Heaton
 Sandra J. Hennessy
 Lisa S. Henry
 Robert C. Heywood
 Scott W. Hines, MD
 Elaine E. Hitchens
 Doretha Hobbs
 Edward Hornsmith
 Lynne Hurst
 Mary M. Inman
 Rick R. Jackson
 Christine J. Jensen
 Brenda D. Johnson
 Daniel E. Johnson
 Holly A. Johnson
 Wilhelmina Johnson
 Donald B. Kappes
 Lloyd J. Kellam, MD

Laura D. Kerbin, MD
 Charles R. Kersh, MD
 Karen King
 Cheri Laboy
 Noel Laboy
 Frances Lassiter
 Joseph D. Layser, MD
 Joyce Lewis
 Susan Lewton
 Nancy W. Littlefield, RN
 Leanna Long, MD
 Marcella Manock
 Robert L. Marble
 Charles H. Marks
 Hugh “Chuck” Marshall
 Elizabeth J. Martin
 Stephen C. McCary
 John F. Miller, MD
 Susan Miller
 Wanda H. Miller, MD
 Paula Mills
 Cassandra Moore
 William Moyano
 Shelley R. Murden
 Tamara T. Neely
 Amelia D. Newsom
 Pamela Nierle, RN
 Barbara K. O’Banion
 Pamela D. Parker
 Robert M. Paschall, DO
 Denise Pashkowitz

Phyllis A. Payne
 Peninsula Cancer Institute –
 Williamsburg Team
 Shannon C. Pierce, RN
 Pankajavalli Ramakrishnan, MD
 Eldridge Reed
 Crystal Richardson
 K. Martin Richardson
 Langdon H. Richardson
 Alicia Riley
 Riverside Cancer Services,
 Genetics and Navigator Teams
 Riverside Center for Excellence
 and Lifelong Health (CEALH)
 Riverside College of Health Careers
 Riverside Diagnostic & Breast
 Imaging Team – Oyster Point
 Riverside Eastern Shore
 Physicians and Surgeons
 Riverside Radiosurgery Center
 Riverside Shore Cancer Care
 Center Staff
 Riverside Tappahannock Hospital
 Jesse D. Rohrer
 Carrie M. Rook
 Sharon L. Rossman
 Danielle Sanders
 Zackary W. Scott
 Holly Seymour
 Sheila Simmons
 Faye Smith
 Victoria Smith

Sandra M. Snapp
 Kelly M. Spencer
 Brenda M. Spivey
 Donald Stainbach
 Shirley V. Stein, MD
 Ilene Stephan, MD
 Jody Stephens, RN
 Brittany C. Stokes
 Curtis Stoldt, DO
 Eric B. Stone, MD
 Donna C. Storm
 Thaddeus G. Sutton
 Kelly A. Taylor
 Pamela Taylor
 Valeria D. Thomas
 Vicki C. Thompson
 Nancy Jean Timberlake
 Mona Toombs
 Jim Towell
 Mona L. Turner
 Ruth A. VanDelaar
 Scott Varney
 Rocio Velasquez-Chauco
 Joanne M. Verhulst
 Joseph Vukson
 Rhonda Waldrop-Eng
 Katelyn A. White, RN
 Angela M. Williams
 Tyvelle C. Williams
 Carol E. Wilson
 Ross Younger, MD

MEMORIAL GIFTS

Thank you for your generous gifts
in memory of these friends and loved ones.

Edward L. Alexander, MD
Florence C. Andrews
Tammi Y. Arrington
Diana P. Atkinson
Patricia Atkinson
Phyllis W. Atkinson
Mary Louella C. Ayers
Carol E. Banwell
Curtis A. Barbour
Margaret A. Barker
Annie D. Barrow-Harris
Richard W. Barton
Lin Batchelor
Robert I. Bell
Timothy N. Bell
Marie L. Benton
Bob Bethel
Vernon C. Bethune
Ruth M. Bowen
Effie W. Bray
Judge James P. Brice
Gerald R. Brink
Inez C. Brown
Marilyn E. Bulin
Joseph K. Bunting

Elizabeth S. Bush
Lida G. Butler
Anna Marie Byrnes
Carol S. Caldwell
J. Warren Callis, Sr.
Oliver R. Carpenter
Arlen F. Carter
Robert J. Caspar
Col (USAF Ret.) Barbara A.
Caton, RN, BSN
Joseph L. Causey
Maxine L. Churchin
Anne L. Clare
Phyllis Clark
Gudrun K. Clements
Malcolm F. Clements
James C. Conner
Debra R. Costello
Warren R. Crockett
John B. Cummings
Cecilia T. Cunningham
Elizabeth B. Curtis
Bessie D. Custis
Russell S. Custis, Sr.
Marilyn Davidson

Kathryn F. Deihl
John H. Delaplaine
Mary Jean S. Delaplaine
Jennifer Megan L. DeVorss
Alexander F. Dillard, Jr.
Elmer Dize, Sr.
Reverend Timothy Q. Doswell
Douglas Dreyer
Gerald J. DuBrino
Emma C. Dunn
Babbie H. Dunnington
Girard and Dorilda Dupere
Jennifer G. Eby
Mark Ellis, MD
Dorothy S. Etz
Holly J. Evans
Nancy W. Evans
Nancy Fisher
Garland L. Forrester
Dorothy P. Fowler
William Fulton
Erma Carol H. Gallagher
Anita S. Garner
James E. Gaskins
Kenneth D. Gaskins, Sr.
Susan Giangrande

MEMORIAL GIFTS

Charles M. Gibson
Phyllis Gilbert
Frederick H. Gilliam
Robert Gilman
Darryl L. Gilmer
Robyn S. Gohsman
Emily A. Gouge
Guenther Gramb
Chanda Grant
Carolyn C. Gray
Kenneth E. Green
Barbara A. Haken
Ruby P. Hancock
Warner R. Hargis, Jr.

Rose A. Harmon
Charles S. Harris, Jr.
Hazel T. Harris
Laurinda F. Hart
Mary M. Hartman
Captain Asbjorn Haus
Leon G. Haynes
Charles G. Hendershot
Shirley Hernandez
Sharon Hieiden
Albert R. Hines
Dorothy G. Hines
Soles H. Howlett
Robert F. Hoyt

Francis J. Hurley, Jr.
Ann B. Hutchinson
Ellis L. Jackson
Stephen A. James
Jerry Jefferis
Junious Jenkins
Eugene N. Jennings, Jr.
Leona C. Jones
William B. Kaiser
Avril G. Kalinich
Donald B. Kappes, Sr.
Jack T. Kaylor
Janet M. Kellam
Marguerite D. Key

Joye E. Koehler
Paul W. Koontz
Carol D. Korman
Howard LeCato
James A. LeCato
Mary P. Lefmann
Lorraine E. Legere
Carole N. Lenna
Clarence W. Lewis, Sr.
Evelyn B. Lewis
Joseph A. Lewis, Sr.
Richard D. Lewis
William F. Lipscomb
Warren G. Lomax
Eleanor B. Loudenslager
Glenda P. Loving
Joseph T. Mapp, III
Vernon & Audrey Markham
John W. Marshall
Gordon F. Martens
Faye Martin
Charles D. Massey, Sr.
David F. Maxson
Victoria A. May
Howard & Helen McAvoy
Harry McFarland
William F. McGrath
Geraldine A. McNamara
Lucas Mendoza



Judith Gindhart, left, established the Jennifer Gindhart Scholarship Endowment Fund to provide financial support for nursing students attending the Riverside College of Health Careers in memory of her daughter, Jennifer who was known as Jenn, RN.

MEMORIAL GIFTS

Joseph Meyers
 Mary Ellen Miller
 James M. Mitchell
 Michael L. Mitchell
 Thomas T. Moles
 Preston B. Moore
 Nancy N. Mullins
 Joseph P. Murphy
 Alverta M. Nelson
 Mary L. Newhouse
 Amelia D. Newsom
 Col. (RET) Albert Newton
 Nghiem D. Nguyen
 David B. Nichols, MD
 Thomas K. Noonan
 Connie Jo North
 Shirley Spain O'Hara
 C. Irene Padilla
 Frances E. Parry
 Peter Pasqualone
 Joan R. Pier
 Charles L. Pinnell
 Mildred Pitts
 Robert A. Pritchard
 Karen R. Rancorn
 David L. Rayl
 Lora Ann Reed
 Josephine M. Renas
 Ernest S. and Dreama Reynolds

Dawn C. Ricketts
 George F. Ricketts
 Joseph D. Ridley, Jr.
 James K. Rindfleisch
 Nancy E. Riviere
 Burl G. Roberts
 Stephen M. Robins
 James S. Ross
 Waverly Routten
 John Sacco
 Stephen C. Sadtler, Jr.
 Pamela Ann D. Scheck
 Robert S. Scott
 Jeanne Serini
 James H. Shackelford
 Donald C. Shepler, Jr.
 Nancy Sherry
 Richard Sherry
 Stanley S. Sienkiewich
 Mary M. Silberman
 Roger N. Simpson
 Floyd B. Smith
 Robert C. Smith, PhD
 Verma L. Smith
 Anne S. Spencer
 Carolyn Spruill
 William G. Stauffer, Sr.
 Carolyn B. Sterling
 Ella Margaret H. Stosch



Pat Costello's gift established the Debra Roob Costello Endowment Fund to benefit oncology patients in Williamsburg. In memory of his wife, Debra, who passed away from a 20 year battle with cancer.

Robert W. Sturgis
 Dallas D. Swan, MD
 Leamon Tar, Jr.
 Lavenia W. Taylor
 Laverne B. Taylor
 Richard W. Taylor, Jr.
 Eileen S. Thomas
 Martha L. Toner
 Oscar L. Trader
 Loreen D. Tyree
 Beth Valentine
 Thelma C. Voss
 David J. Walters
 Irene H. Warner

Viola F. Warren
 Andrew Watson
 Thomas E. Watson, Sr.
 Margaret A. Watts
 John W. Weaver
 Diana M. Weeks
 Doris Westmoreland
 John W. Widgen, Sr.
 Evelyn R. Wigley
 Linda L. Wirkner
 Robert W. Wood, Sr.
 Alberta M. Worsham
 Eleanor J. Yarbrough

On the next pages, read about two past scholarship recipients now pursuing their life dreams, and four new scholarship winners about to embark on their new adventures. We hope their stories will inspire you to contact us about our many gift options for the support of education.

Riverside's Commitment to Education Spans 100 Years

HERITAGE FROM THE PAST; FOCUS FOR THE FUTURE

It's no secret that the costs of higher education are soaring nationally even as the demand for knowledgeable, highly skilled workers in virtually every field is increasing. That's a primary reason the Riverside Foundation has identified **education** as one of four areas where we can make a significant difference in the communities we serve. As Board Chairman Conway Sheid, III, notes, "Support for education is ensconced in Riverside's corporate genes. It's part of our heritage and will be a major focus for the Foundation in the future."

This commitment to education spans more than 100 years. The Training School for Nurses opened in 1916 along with the Newport News General and Non-Sectarian Hospital, which would evolve into Riverside Regional Medical Center. Currently in partnership with Old Dominion University, the original nursing school has grown into the Riverside College of Health Careers offering programs in Professional Nursing, Practical Nursing, Radiologic Technology and Surgical Technology, as well as training for Physical Therapist Assistants, Sterile Processing Technicians and Medical Assistants at its new consolidated campus, which opened in 2005.

Over the years, the Riverside Foundation has played a large role in providing financial assistance in the form of scholarships and other support for education. "Thanks to some very generous donors, the Foundation has been able to help establish and manage several significant scholarship funds that provide financial assistance for students in the College of Health Careers, to children of Riverside team members, and to team members who are pursuing various continuing education programs," Executive Director Debbie Atkinson said. "Foundation endowment funds provided more than \$125,000 in educational assistance this past year. In addition, the College of Health Careers awarded more than \$238,000 in scholarships to its students."

She said the Foundation would focus on expanding the existing scholarships and other education funds in the next year. "For donors interested in education, whether you choose to make a gift today or a gift for the future through a will or trust, you will create a direct impact on the lives of so many young people as they pursue their futures."

2009 Scholarship Winner Closing in on Ph.D.

NICK DEWEERD— MILLENNIAL ON THE MOVE

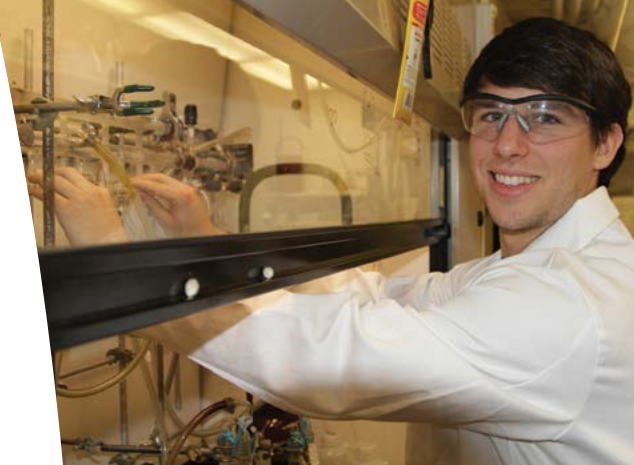
Any qualms you may have about turning the country over to the incoming majority age group will be assuaged by a 15-minute conversation with Nicholas (Nick) DeWeerd. This 25-year-old “millennial” has a firm grasp of where he wants to go in life, and a solid plan on how to get there. Don’t be surprised if you hear a lot about him in the future because he just might have a hand in changing it—the future that is.

The son of Carie DeWeerd—a Gardens at Warwick Forest employee—Nick was awarded a Jean Raines scholarship in 2009. After graduating from York High School, he headed off to Virginia Tech to earn a Bachelor of Science degree in chemistry. After a research internship at the Naval Research Center in Maryland, Nick enrolled in the Ph.D. program at Colorado State University, where he expects to receive his doctorate within the next year.

“The internship at the Naval Research Center convinced me that a career in research was where I wanted to be,” Nick said. “I applied to several universities, but chose Colorado State because it’s a research-based school. I’ve been able to focus my time completely on research while working with some really brilliant people. Plus, it’s a five-year program that lets me go straight through to a Ph.D.”

After getting his degree, Nick will be looking at a career in organic photovoltaic research. That may sound like a pretty esoteric field, but it has the potential to be a game-changer in the development of alternate energy sources. “It’s a field that presents real challenges with the potential for big rewards,” Nick said. “I’m easily bored so I need to be where things are evolving quickly.”

He’s grateful for the financial help provided by the Jean Raines scholarship. “My mom always encouraged me to work hard and to focus on personal achievement, but there’s always the question of how to pay for an education. The scholarship was a big help to my parents financially. And it’s helped me pursue my own personal dreams. I’m very thankful for that.”



Nicholas (Nick) DeWeerd, one of two high school students awarded a Jean Raines scholarship in 2009



Nicholette Amburgey,
2009 Jean Raines Scholar

Jean Raines Scholar “Pirouettes” Into Classroom **NICHOLETTE AMBURGEY— FROM DANCER TO TEACHER**

“When I was in high school, I’d never even thought about teaching as a career,” says Nicholette Amburgey. “But when I was about 16, Elizabeth Evans, the owner and director of the Northampton Dance Studios where I’d studied almost all my life, asked if I’d like to teach some classes for very young children. I did and I loved it! And it changed the focus of my life from dancing to teaching.”

The second 2009 winner of a Jean Raines scholarship, Nicholette enrolled at Christopher Newport University in 2009. She received her Bachelor of Arts degree in sociology in 2013, a Master of Education degree in 2014 and began teaching in late 2014. “I finished my BA degree in 3.5 years though I did walk with my class in 2013. Because of this I got a graduate assistant position in the office of teacher preparation and they paid for my master’s degree,” she said.

Nicholette is now in her third year of teaching first grade at Willis A. Jenkins Elementary School in Newport News. So how has the experience been for her? The good news is that she still loves it. “Teaching is my passion. To be a teacher, you have to love it, really love it,” she said. She said teaching first grade especially puts a lot of pressure on the instructor.

“Most of the kids come in from kindergarten knowing their letters (the alphabet), but you have to turn them into fluent readers pretty quickly,” she said. “First grade lays the foundation for second grade and third grade, which is an SOL testing year. Nothing can prepare you for walking into class that first day and seeing 20 kids staring at you. You have a feeling of power mixed with a bit of fear.”

Nicholette’s mother is Karen Amburgey, Family Practice Coding Manager for Riverside Medical Group. “Getting the Jean Raines scholarship was a great help financially and I’m very grateful to have received it,” said Nicholette. I often think about Mrs. Raines and her love of education. I never met her, of course, but I really think we would have had a lot in common.”

Scholarship Funds Award Four 2016 Scholarships

FINANCIAL AID PROVIDED FOR OUTSTANDING STUDENTS

Amy Carson, RN-MNN Wins Willie P. Francis Scholarship. Amy was born on the Eastern Shore. She has a strong sense of community and is driven to use her nursing education and experience to help transform the lives of those in her care, creating a strong, healthy community. Amy has worked as a Mother and Baby—Postpartum RN for the past eight years. She was recently promoted to Clinical Nurse Educator for the Women and Infant Care unit at Riverside Regional Medical Center in Newport News.

“As a nurse, it is my role to be educator, supporter, caregiver and comforter, many things I learned first-hand as a nursing student and later novice nurse from Ms. Willie Francis herself. She was a great source of knowledge and compassion to many nursing students before and after me,” Amy said. She is currently pursuing her BSN from Virginia Commonwealth University.

The Willie P. Francis Scholarship was established to advance educational opportunities for the Birthing and Family Health Services staff at Riverside Regional Medical Center. Willie Francis’ nursing education and service spanned 46 years. When she retired, this scholarship was established in her honor.

Tara Sutton Wins Bates Family Education Scholarship. Tara is passionate about volunteering and believes it is a great way to make a positive impact and help with the growth of a community.

“I have learned that volunteering can help improve the emotional, physical and mental aspects of a community. Whether teaching children a new sport, passing out food at the food bank, repairing homes of the elderly, or simply taking the time to visit with residents in a senior care community, volunteers have the ability to make a difference in the lives of others,” Tara said. She is currently pursuing her Associate of Applied Science degree in Radiologic Technology through the Riverside College of Health Careers.

The Bates Family Education Scholarship was established to advance educational opportunities for qualified individuals who demonstrate a commitment to volunteerism. The Bates Family has created this opportunity to reward educational excellence.



Amy Carson, RN-MNN, right, wins Willie P. Francis Scholarship



Tara Sutton wins Bates Family Education Scholarship



Madison Hogge,
2016 Jean Raines Scholar

Madison Hogge, Jacob Beebe Win JEAN RAINES FAMILY SCHOLARSHIPS

Madison Hogge has no fear of failure; in fact, she sees it as an opportunity. “A lesson is soon to follow every failure,” said Madison. “These lessons eventually lead to success by allowing an individual to grow as a person by gaining essential qualities such as determination and perseverance. If I did not have failures, I would not be the person I am today.”

A graduate of Gloucester High School, Madison is described by her teachers as insightful, charming, dynamic and an excellent example for future generations. Her former English teacher said, “Madison believes in being an active citizen who leaves a discernible, beneficial mark on her community. Her energy is contagious and her congeniality a gift.” She’s the daughter of **Stacia Hogge** who works in the IS Financial Support Department. Stacia has celebrated 25 years at Riverside. Madison is studying Animal and Poultry Sciences at Virginia Tech.



Jacob Beebe,
2016 Jean Raines Scholar

Jacob Beebe places a high value on education. He is excited about his future and what he has yet to learn. “This is what excites me to further my education: the ability to discover new solutions and affect the future of our entire world,” said Jacob. “Education provides an opportunity to change the world around you, to create new technologies that will assist those in poverty.”

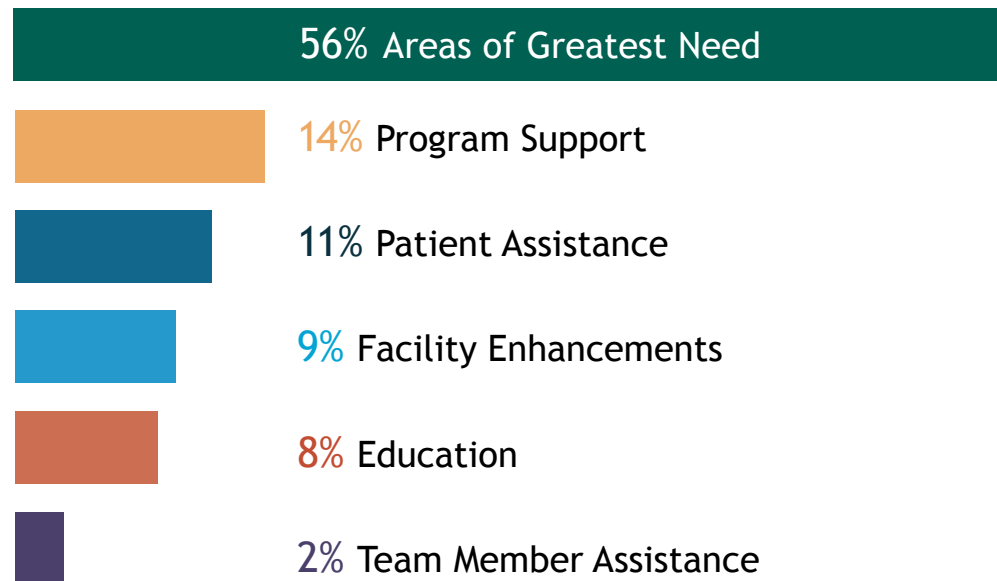
Jacob graduated from Middlesex High School where he was a member of the soccer, football, basketball, and wrestling teams. In addition to being a member of the National Honor Society, Jacob also attended the Chesapeake Governor’s School for Marine and Environmental Science. Jacob’s high school counselor stated, “Jacob will indeed continue to make significant contributions to and positively influence the many individuals who have the pleasure of knowing him.” Jacob is the son of **Steven Beebe**, Nurse Manager at Riverside Walter Reed Hospital. Steven has celebrated 20 years at Riverside.

Riverside Health System and the family of Jean Raines established the Jean Raines Family Scholarship Fund to honor her 40-plus-year career at Riverside. Jean Raines’ life exemplified the true definition of success, and her commitment to lifelong learning and education was evident in her numerous accomplishments recognized by national and state organizations. The Scholarship encourages the children and grandchildren of Riverside team members to pursue educational goals that support both their personal and professional development.

Riverside Foundation Year-End 2016 FINANCIAL UPDATE

Thanks to the generosity of our donors, in 2016 we invested \$1,502,028 in the following areas throughout the communities cared for by Riverside.

Impact areas



Donors: 3,800

Gifts: 4,621

Cash, Pledged and
In-Kind Gifts:

\$1,835,366.64

Health System

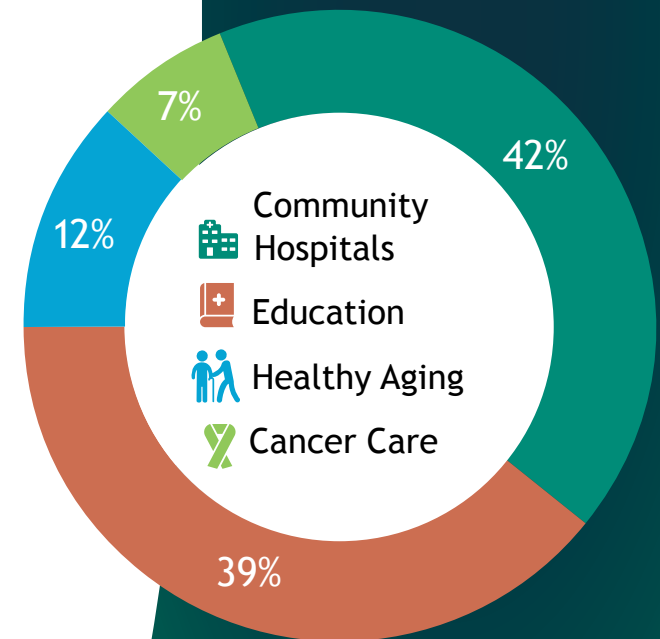
Grants and Awards:

\$986,842.36

Investment Gains: \$371,765.84

Total Revenues: \$3,193,974.84

Top Four Gift Destinations





Philanthropic contributions advance and further Riverside's mission to care for others as we would care for those we love.
This list includes all Founder's Society Members as of December 31, 2016

**Second Century Circle
\$100,000 and above**

Nancy E. Bates
Thomas J. Bayne, Jr. and Family
Pierre and Catherine Dohet*
William and Carol Downey
Ruby Pope Drumm*
Jesse Doswell Dutton*
Dr. Mark E. and Lynn H. Ellis
Drs. Roger and Theresa Emory*
Faye P. Gargiulo*
Judith Gindhart*
Caramine Kellam
COL Robert (Ret) and Susan McCreary, USAF*
Jane D. McKinney, Ph.D.
Richard J. and
Catherine B. Pearce*
William S. Phillips*
Paul and Mary Agnes Truttschel*
Riverside Shore Memorial Hospital Auxiliary
Riverside Regional Medical Center Volunteers

Newport News Shipbuilding
North American Partners in Anesthesia
PNC Bank
Steve Spain, Spain Commercial
Turner Construction Company

**Humanitarian Circle
\$50,000 and above**

Wade and Amy Broughman
Patrick and Debra Roob Costello*
Dr. Hugh and Sherrill McCormick
Dr. Anthony and Carol Santoro
Riverside Tappahannock Hospital Volunteers
Riverside Walter Reed Hospital Volunteers

**Healing Circle
\$10,000 and above**

Jerry and Danette Allen
Dexter and Debbie Atkinson
Wanda M. Austin
W. William and Rebecca Austin

Dr. Patricia Barry
Charlie and Golden Bethune-Hill
Mason Brent
Willie and Debra Campbell
Drs. Thomas and Anastasia Cleary
Margaret Cook
Dr. Lucy E. Defanti
Dr. James and Carolyn Dudley
Jack and Carol Dubbs
Benjamin and Frances Ellis
Drs. Charles and Lisa Frazier
Geraldine T. Gladding*
Royden and Martha Goodson
Dr. Barry Gross
Angelo Guastaferro
George Handley
Robert and Nancy Harding
Chuck and Sally Hartman
Marguerite Hopkins*
Jason and Keri Houser
John and Carol Jamison
Rick and Donna Jackson*
Terris E. Kennedy, Ph.D., R.N.
Dr. James and Trina Lesnick
Diana L. LoVecchio
Dr. John C. and Paul P. Maddox
Dr. H. Blair and Luisa Marsteller

Pat and Liz Martin
Robert and Claudia McDermott
Peter and Kerry Mellette*
Dr. Patrick and Catherine Parcells
Melanie L. Parkhurst
Luis H. Pena*
John Peterman
Charles and Sally Gayle Revere
Dr. J.F. Sanderson, Jr.
Drs. Michael and Cherry Schwartz
Conway and Kay Sheild
Charles and Jeri Sibley
Len and Faith Shartzter
Dr. David M. Smith
Dr. Christopher and Lisa Stolle
Dr. Damien Tagliente
Paul and Rosemary Tribble
Rhonda Waldrop-Eng
Rhys and Nancy Weakley
Hill and Alice Wellford
William and Susanne Wellford
LCDR Jason and Kristi Wells and Family, USN
Tom and Liz Williams
Capt. Philip Yosway, (Ret), USN
Abingdon Ruritan Club

Huntington Garden Club
Tangier Island Health Foundation
Riverside Regional Medical Center
Facilities Engineering Team
C.A. Barrs Contractor, Inc.
Chesapeake Bank
CSX Transportation
DPR Construction
Essex Bank
EVB
FTI Consulting
G.C. Commercial, Inc.
Grace Industries, Inc.
Greg Garrett Realty
Hourigan Construction
Kaspersky Lab, Inc.
Kaufman & Canoles
PMA Architecture
RLPS Architects
Callison RTKL
SHI International Corp.
Taylored Printing
Towne Bank
Vansant and Gusler, Inc.
* Cornerstone Legacy Contributors